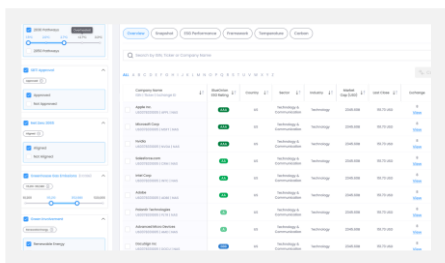


Scale your ESG Investment Research with MAGIC FILTER

Intensive company and ESG-related research is the center of success to what you do for clients these days. Ensure your research gets to the bottom of these companies' sustainability and profit strategies, from investment performance to portfolio carbon emissions to aligning global net-zero endeavors and avoiding greenwashing traps with Magic Filter.

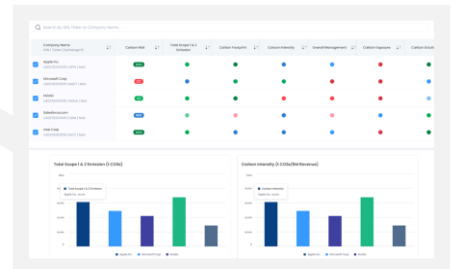
Screen companies' ethical, ESG, & carbon characteristics by significance



Bring efficiency to finding the best investment returns



Compare, rank & simulate with the Comparison tool



USE MAGIC FILTER TO

Centralize your investment and ESG research.

Filtering sounds like a simple term but including best-in-class investment performance and excluding potential greenwashing traps are problems many research teams face daily.

Bring efficiency to your research flow.

There is a well-defined due diligence process for screening companies, but you rely on Excel to align the company's financial materiality. The scatter plot frees you from correlating investment returns and ESG performance.

Justify investment decisions with stakeholders.

Magic Filter helps you prove to stakeholders who want to fully understand the process behind how each company is chosen and that your prudently selected companies are not harming the environment while retaining incredible gains. With the purpose-built filters, your due diligence process is streamlined to the finest.

Set up your **Magic Filter** to arm your research management with the best tools.

Magic Company Filter offers you access to 40,000 companies with over 250 data points for selection, filtering, comparing, and sorting. The analytic tool helps investment managers to rank and simulate what-if scenarios

Build the most sustainable Portfolio:

solutions@blueonion.today