

CPFIS FUNDS REPORT

Semi-Annual Report For The Half Year Ended 30 June 2012



Topics covered include:

- Product Highlights Sheet

September 2012

Lipper, a Thomson Reuters company



TABLE OF CONTENTS

Section	Page
1. Introduction - Using the Simplified Report: CPFIS Funds Report	2
2. Product Highlights Sheet	3
3. Scatter Plot for CPFIS	
Unit Trusts	10
Investment-linked Insurance Products	10
4. Expense Ratio Graphs - Funds with the 5 Highest and 5 Lowest Expense Ratio in each risk category	
1. Higher Risk Category	11
2. Medium to High Risk	12
3. Low to Medium Risk	13
5. Annex A - Supporting Tables for H1 2012 data	14
6. Annex B - H2 2011 Data	21

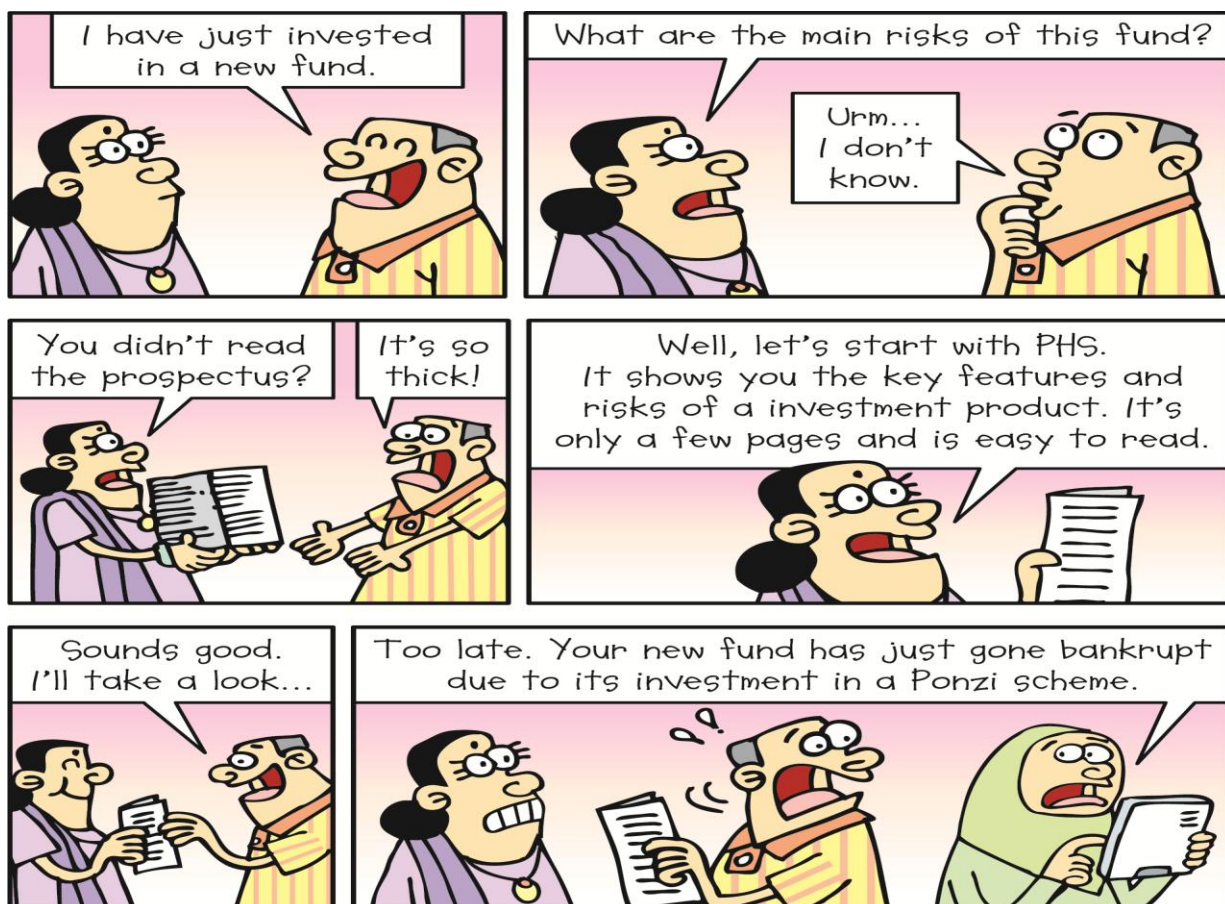
INTRODUCTION - USING THE SIMPLIFIED REPORT: CPFIS FUNDS REPORT

In the previous issue of the CPFIS Semi-Annual Funds Report, we considered various types of investment-related risks (such as credit, liquidity, country, currency, interest rate, market, and inflation risks) as well as the trade-off between risk and return.

In this issue, we describe a recent addition to the disclosure documents – Product Highlights Sheet – that investors will be provided when considering the purchase of investment products such as unit trusts, investment-linked insurance funds, or structured notes.

How will this report help me?

You will learn about the contents of Product Highlights Sheet, which is a useful document to complement prospectuses / product summaries in helping investors make informed investment decisions.



Product Highlights Sheet

If you have invested in a unit trust or investment-linked insurance fund recently, you would have noticed a new addition to the disclosure documents (prospectus or product summary of the fund) called 'Product Highlights Sheet'.

What is Product Highlights Sheet?

As part of the initiatives taken by our financial regulator, Monetary Authority of Singapore (MAS), to enhance the safeguards to retail customers, issuers of investment products such as unit trusts, investment-linked insurance funds, or structured notes are required to produce Product Highlights Sheet for their products. The aim is to improve the quality of information available to customers in order to enable them to make informed investment decisions.

A Product Highlights Sheet highlights key features and risks of the investment product. It also provides key information relating to the product in a clear, succinct and effective manner. In order to achieve this, the format for the disclosure of information in the Product Highlights Sheet, such as specific questions, number of pages, layout and font size, is prescribed by MAS (a sample is shown in the next section). In addition, it should not contain any information that is not included in the prospectus/product summary or any information that is false or misleading. Nevertheless, investors should still refer to the prospectus in making an investment decision.

What is included in the Product Highlights Sheet?

Information in the Product Highlights Sheet is presented in a question-and-answer format:

- Prepared on DD/MM/YY
- This Product Highlights Sheet is an important document.
- It highlights the key terms and risks of the investment product/ILP sub-fund and complements the Prospectus/Product Summary.
 - It is important to read the Prospectus/Product Summary before deciding whether to purchase units in the product/ILP sub-fund. If you do not have a copy, please contact us to ask for one.
 - You should not invest in the product/ILP sub-fund if you do not understand it or are not comfortable with the accompanying risks.
 - If you wish to purchase the product, you will need to make an application in the manner set out in the Prospectus.

NAME OF PRODUCT/ILP SUB-FUND

Product Type	Unit Trust/ILP Sub-fund	Launch Date	[•]
Manager	[•]	Custodian	[•]
Trustee	[•]	Dealing Frequency	Every Business Day/ etc.
Capital Guaranteed	[Yes/No]	Expense Ratio for [Previous FY]	[•]
Name of Guarantor	[•]		

PRODUCT/SUB-FUND SUITABILITY

WHO IS THE PRODUCT/SUB-FUND SUITABLE FOR?

Example:

The Fund is only suitable for investors who:

- seek capital growth over a period of 3 years or longer;
- also seek regular income through yearly distributions; and
- are comfortable with the greater volatility and risks of an equity fund.

Further Information
Refer to the "[Relevant Section]" on Pg XX of the Prospectus/Product Summary for further information on product /sub-fund suitability.

KEY PRODUCT/SUB-FUND FEATURES

WHAT ARE YOU INVESTING IN?

Example:

- You are investing in a unit trust/ILP sub-fund constituted in [Place of constitution] that aims to provide you with returns through long term capital growth by investing in companies set up in the Asia Pacific region.
- You may receive yearly distributions on or around 31 December. The Manager will decide whether a distribution is to be made based on [factors].

Refer to the "[Relevant Section]" on Pg XX of the Prospectus/Product Summary for further information on features of the product/sub-fund.

Investment Strategy

Example:

- The Fund will invest primarily in shares of companies listed on stock

Refer to the "[Relevant Section]" on Pg

Page 1 of 4

PRODUCT HIGHLIGHTS SHEET

Product Suitability

Here, the issuer will describe for whom the product is suitable, e.g. stating what return objectives (i.e. capital growth, capital preservation or yield enhancement) could be met by the product, how long the investors should be prepared to stay invested and any other key characteristics of the product that will help investors determine if it is suitable for them.

Key Product Features

- It serves to answer the questions of 'what are you investing?' and 'who are you investing with?'
- Information such as the legal classification of the product, its investment objectives, the strategy or approach that will be adopted in order to achieve the objectives as well as all the parties involved in the structure of the product will be described here.
- Diagrams such as graphs, charts, flowcharts etc. could also be found in the Product Highlights Sheet to aid explanation of the product features.

exchanges in the Asia Pacific region. The Fund may hold cash or invest in derivatives instruments for purposes of hedging, reducing cost, reducing risk, or generating capital or income for no or minimal increase in risk.	XX of the Prospectus/ Product Summary for the full diagrams of the structure of the Fund.
Parties Involved	
WHO ARE YOU INVESTING WITH? Example: <ul style="list-style-type: none"> The Manager is [●], and the Trustee is [●]. The fund uses [●] as the counterparty for most of its derivative transactions 	Refer to the "[Relevant Section]" on Pg XX of the Prospectus/ Product Summary for further information on the role and responsibilities of these entities and what happens if they become insolvent.
KEY RISKS	
WHAT ARE THE KEY RISKS OF THIS INVESTMENT? The value of the product and its dividends or coupons may rise or fall. These risk factors may cause you to lose some or all of your investment:	Refer to the "[Relevant Section]" on Pg XX of the Prospectus/ Product Summary for further information on risks of the product/sub-fund.
Market and Credit Risks	
Example: <ul style="list-style-type: none"> You are exposed to the market risks in Asia Pacific markets. <ul style="list-style-type: none"> Your investments may go up or down due to changing economic, political or market conditions that impact the share price of the companies that the Fund invests in. You have greater exposure to market risks as this is an equity fund. <ul style="list-style-type: none"> Historically, equities have greater volatility than bonds and other fixed income securities. The Fund's valuation and the price at which you can exit may correspondingly fluctuate more strongly on a day-to-day basis compared to funds investing in bonds and other fixed income securities. 	
Liquidity Risks	
Example: <ul style="list-style-type: none"> The Fund is not listed and you can redeem only on Dealing Days. There is no secondary market for the Fund. All redemption requests 	

Page 2 of 4

PRODUCT HIGHLIGHTS SHEET

Key Risks

- This section describes the major risks of investing in the product, which might lead to partial or full capital loss.
- In addition, product-specific risks such as derivatives risks, which could arise due to the product's investment strategy/approach, will also be highlighted.
- Descriptions for more common risks such as market and credit risks as well as liquidity risks can be found here [see previous issue of CPFIS Funds Report – Simplified Version (Issue 11) for more information on these risks].

should be made to the Manager.													
Product Specific Risks													
<p>Example:</p> <ul style="list-style-type: none"> You are exposed to derivatives risks. <ul style="list-style-type: none"> The Manager may use derivative instruments, including futures, options, warrants, forwards, swaps or swap options, from time to time in managing the investments of the Fund. The usage of derivatives may negatively impact the value of the Fund and the Fund may suffer greater losses than if the Fund had not used derivatives At the worst case, you may lose all your funds invested if the Fund is fully exposed to derivative positions that move against the Manager's judgment. 													
FEES AND CHARGES													
WHAT ARE THE FEES AND CHARGES OF THIS INVESTMENT?													
<p>Example:</p> <p><u>Payable directly by you</u></p> <ul style="list-style-type: none"> You will need to pay the following fees and charges as a percentage of your gross investment sum: <table border="1"> <tr> <td>Sales Charge</td><td>Up to 3% for CPF Investment</td></tr> <tr> <td>Redemption Charge</td><td>Currently NIL (maximum 5%)</td></tr> <tr> <td>Switching Fee</td><td>Currently NIL (maximum 1%)</td></tr> </table> <p><u>Payable by the Fund from invested proceeds</u></p> <ul style="list-style-type: none"> The Fund will pay the following fees and charges to the Manager, Trustee and other parties: <table border="1"> <tr> <td>Management Fee</td><td>1.5% per annum</td></tr> <tr> <td>Trustee Fee</td><td>0.1% per annum, subject to minimum of S\$15,000</td></tr> <tr> <td>Accounting and Valuation Fee</td><td>0.025% per annum, subject to a minimum of S\$5,000</td></tr> </table>		Sales Charge	Up to 3% for CPF Investment	Redemption Charge	Currently NIL (maximum 5%)	Switching Fee	Currently NIL (maximum 1%)	Management Fee	1.5% per annum	Trustee Fee	0.1% per annum, subject to minimum of S\$15,000	Accounting and Valuation Fee	0.025% per annum, subject to a minimum of S\$5,000
Sales Charge	Up to 3% for CPF Investment												
Redemption Charge	Currently NIL (maximum 5%)												
Switching Fee	Currently NIL (maximum 1%)												
Management Fee	1.5% per annum												
Trustee Fee	0.1% per annum, subject to minimum of S\$15,000												
Accounting and Valuation Fee	0.025% per annum, subject to a minimum of S\$5,000												
VALUATIONS AND EXITING FROM THIS INVESTMENT													
HOW OFTEN ARE VALUATIONS AVAILABLE?													
HOW CAN YOU EXIT FROM THIS INVESTMENT AND WHAT ARE THE RISKS AND COSTS IN DOING SO?													
<p>Example:</p> <ul style="list-style-type: none"> You can exit the Fund at any time by writing to the Manager/informing the insurer, either directly or through the financial adviser from whom you purchased the Fund. If you do so within the cancellation period of 7 days from time of purchase (for unit trust)/14 days free-look of the initial purchase of the ILP (for ILP sub-fund), you may do so without incurring the sales charge and fees stated above. However, you will have to take the risk for any price changes in the NAV of the Fund since you purchased it and pay an administrative fee of \$X. 													

Page 3 of 4

PRODUCT HIGHLIGHTS SHEET

Fees and Charges

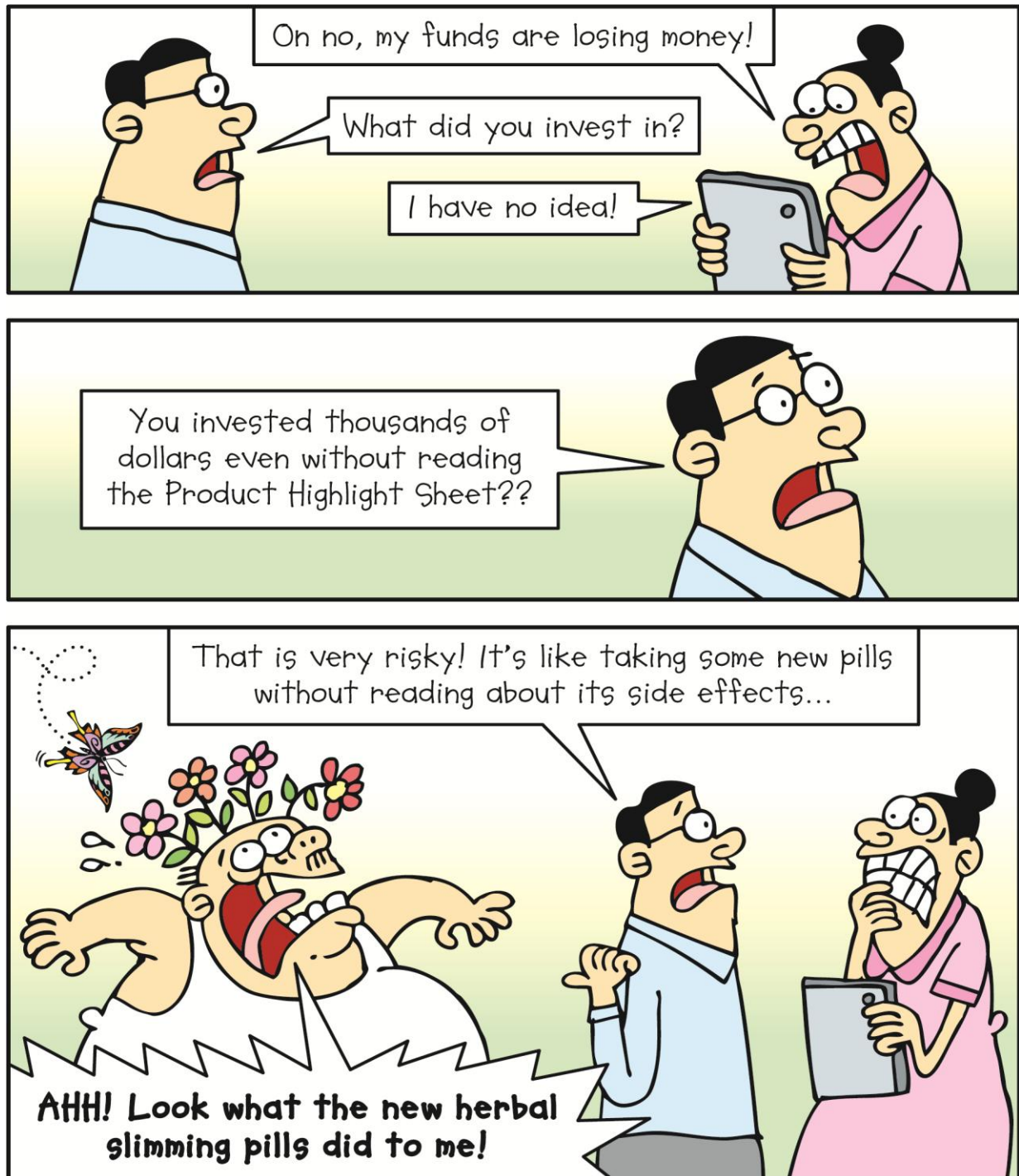
- All fees and charges (e.g. switching and redemption fee) that will be incurred by investors will be disclosed here.
- This section is categorised into two parts: one on fees that are payable directly by the investors, such as sales charge; and another on those that will be paid from the fund's assets, such as management fee.

Valuations and Exiting from This Investment

- Investors will find information on how often and where valuations on the product are published.
- How the investors can exit from the investment (including information on how is the selling price determined, when will sale proceeds be received, the cooling off/free-look period), and the associated risks and costs that will be incurred are described here as well.

<ul style="list-style-type: none"> You will receive the sale proceeds within six business days from the time the Manager receives your request to exit from the Fund. Your exit price is determined as follows: <ul style="list-style-type: none"> If you submit the redemption order before 5pm on a business day, you will be paid a price based on the net asset value of the Fund at the close of that business day. If you submit the redemption order after 5pm, you will be paid a price based on the net asset value at the close of the next business day. The sale proceeds that you will receive will be the exit price multiplied by the number of units sold, less any charges. An example is as follows: Exit price X Number of units sold = Gross Sale Proceeds S\$1.250 X 1,000 = S\$1,250 Gross Sale Proceeds - Realisation Charge = Net Sale Proceeds S\$1,250 - S\$0.00 = S\$1,250 	
CONTACT INFORMATION	
HOW DO YOU CONTACT US?	
APPENDIX: GLOSSARY OF TERMS	
Term:	Description
Term:	Description

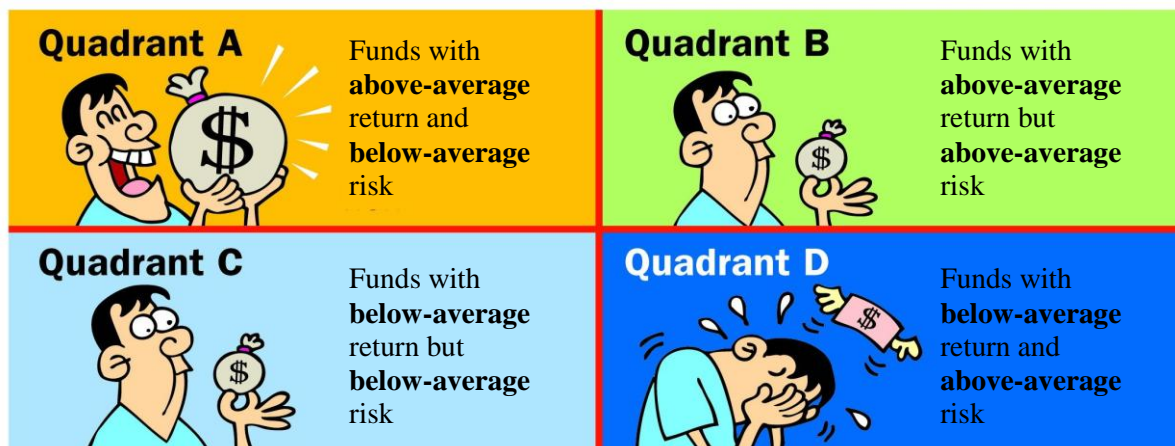
Conclusion



Warren Buffett said "Risks come from not knowing what you're doing". Customers should make full use of the Product Highlights Sheet, which complements the prospectus, to understand the key features and risks of an investment product before making an investment decision.

DESCRIPTION & INTERPRETATION OF RISK/RETURN SCATTER PLOTS

The scatterplots on page 10 compare the return performance of CPFIS-included unit trusts (UTs) and Investment-Linked Insurance Products (ILPs) against their risk level (i.e. volatility). Return performance is shown on the vertical axis and the funds' volatility on the horizontal axis. Using the median lines (dotted in red) as dividers, four distinct quadrants are formed, representing the following:



Quadrant A might be seen as the most optimal choice where the fund managers have managed to produce relatively higher returns while minimising the funds' volatility.

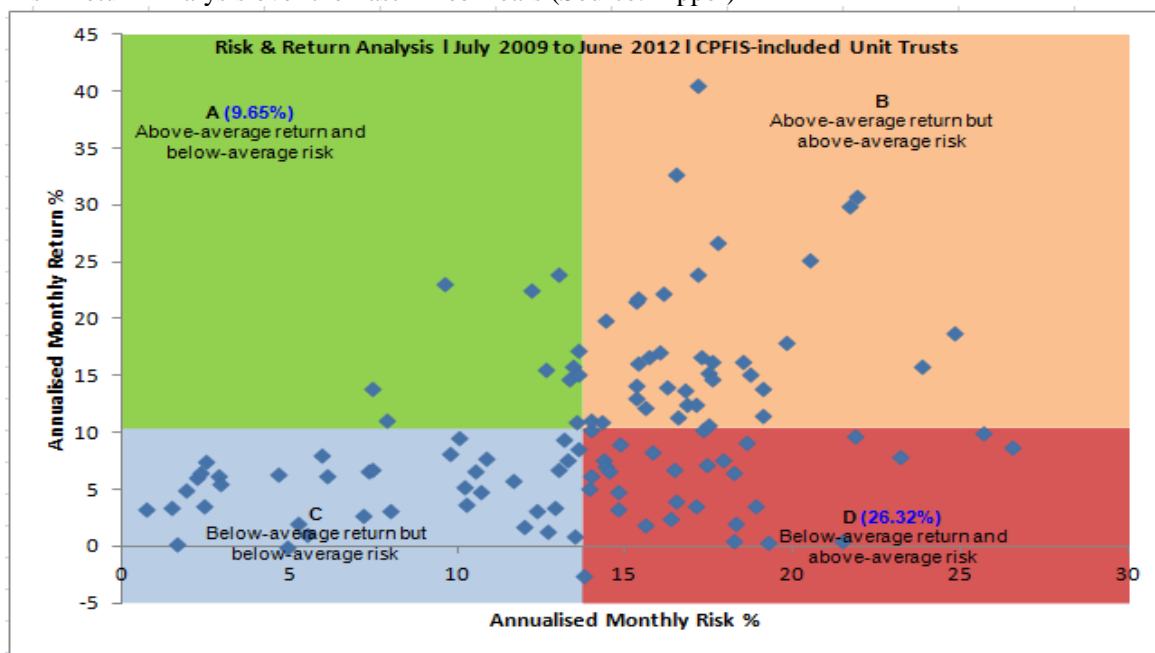
All quadrants with the exception of D are desirable depending on the investor's risk tolerance level and return requirements.

Which quadrant does your CPFIS funds fall under? Refer to Annex A for a full listing.

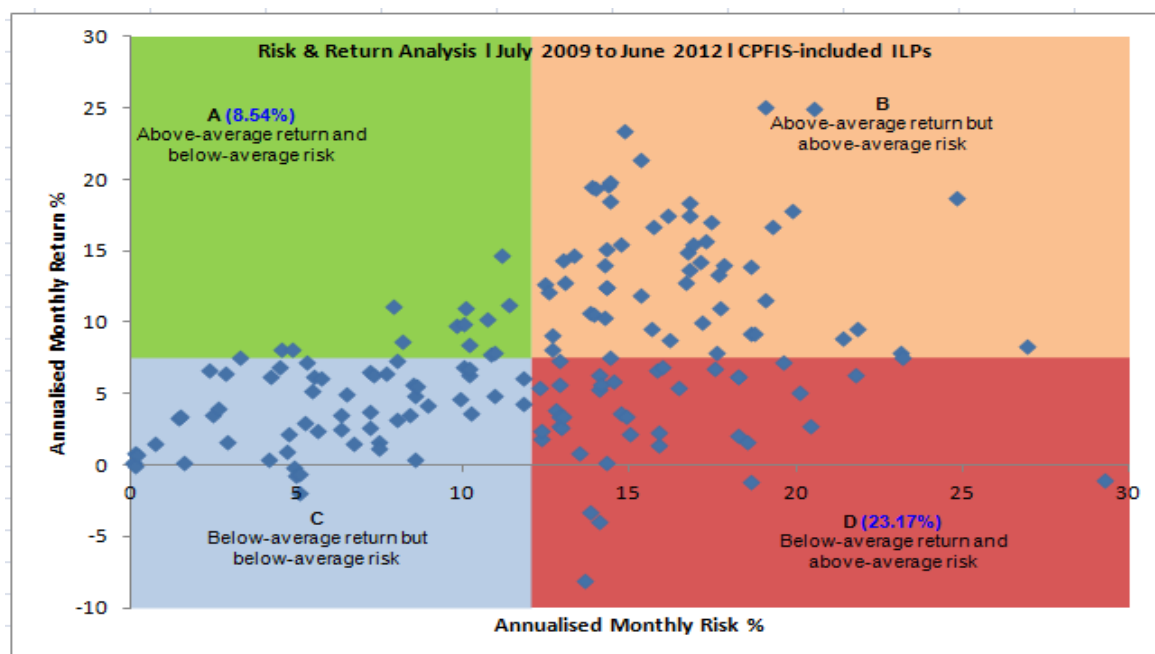
3. SCATTER PLOT FOR CPFIS

SUMMARY OF RISK-ADJUSTED PERFORMANCE

Risk-Return Analysis over the Past Three Years (Source: Lipper)



Over the three-year period from 1 July 2009 to 30 June 2012, 9.65% of all CPFIS-included unit trusts fell into quadrant A, while 26.32% of the funds were in quadrant D.



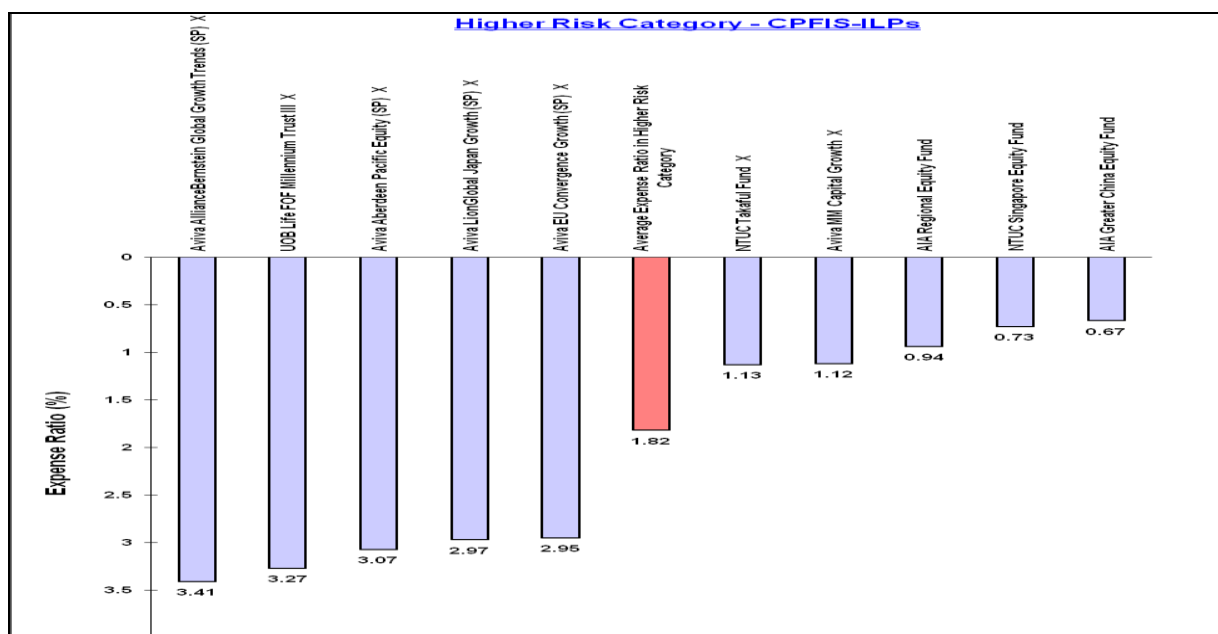
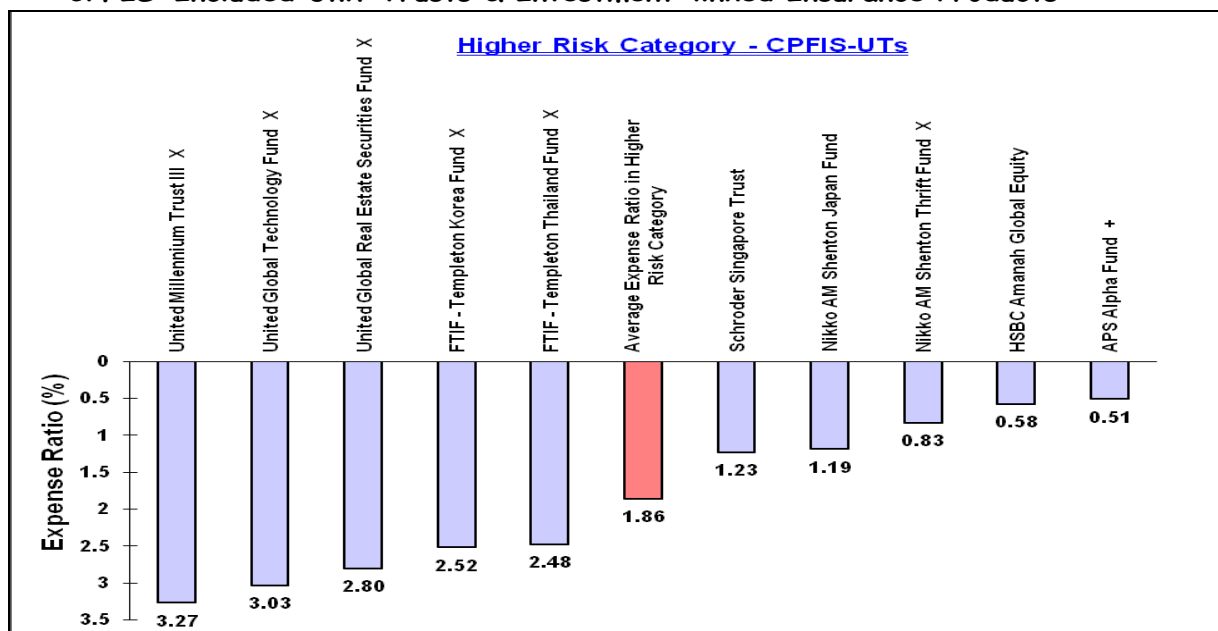
Over the three-year period from 1 July 2009 to 30 June 2012, 8.54% of the ILPs were in quadrant A, while 23.17% of the CPFIS-included ILPs were in quadrant D.

* For the complete list of funds in each quadrant, please see Annex A.

4. EXPENSE RATIO GRAPHS - FUNDS WITH THE 5 HIGHEST AND 5 LOWEST EXPENSE RATIO IN EACH RISK CATEGORY

A) Higher Risk Category

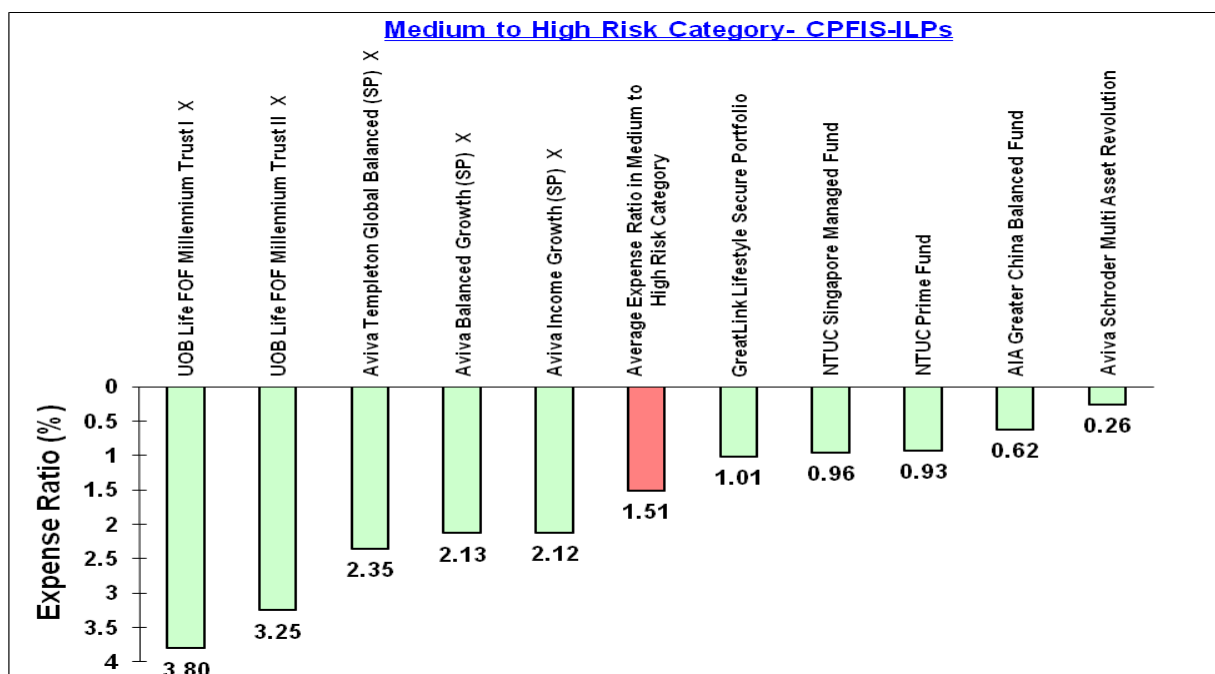
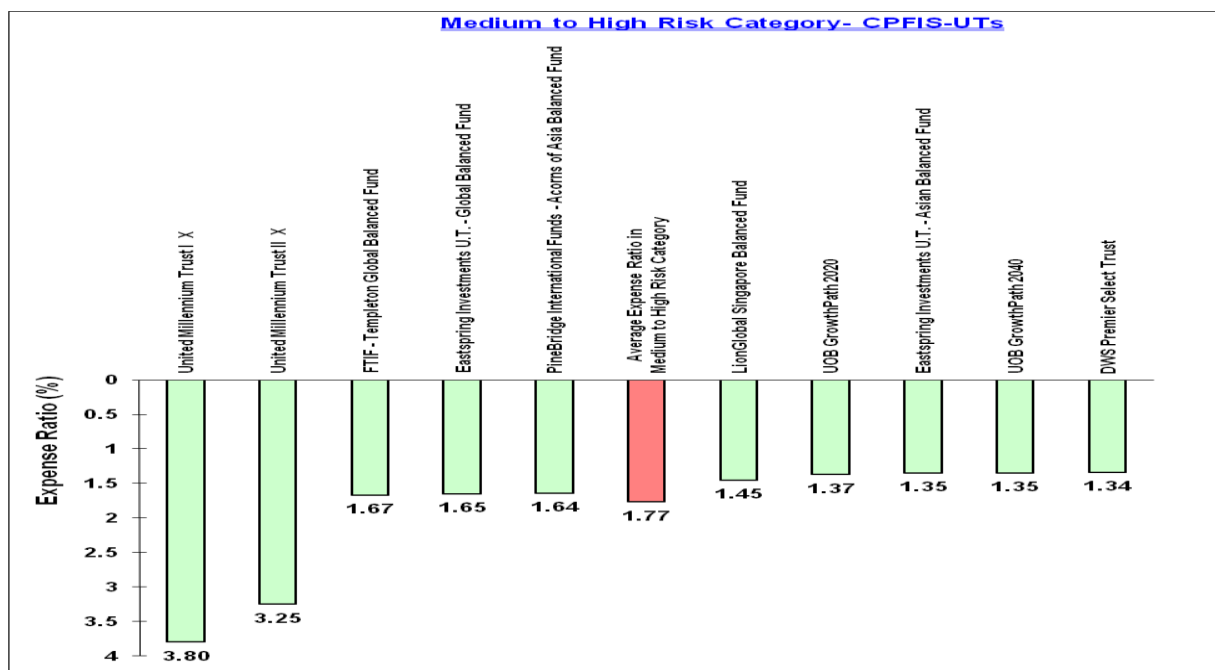
CPFIS-Included Unit Trusts & Investment-linked Insurance Products



* The expense ratios of Aviva's ILPs include all expenses and costs necessary to issue and maintain the ILPs. Unlike other ILPs, Aviva's ILPs do not charge an upfront sales charge, mortality fee, policy fee, bid-offer spread and switching fee separately from their management fee.

B) Medium to High Risk Category

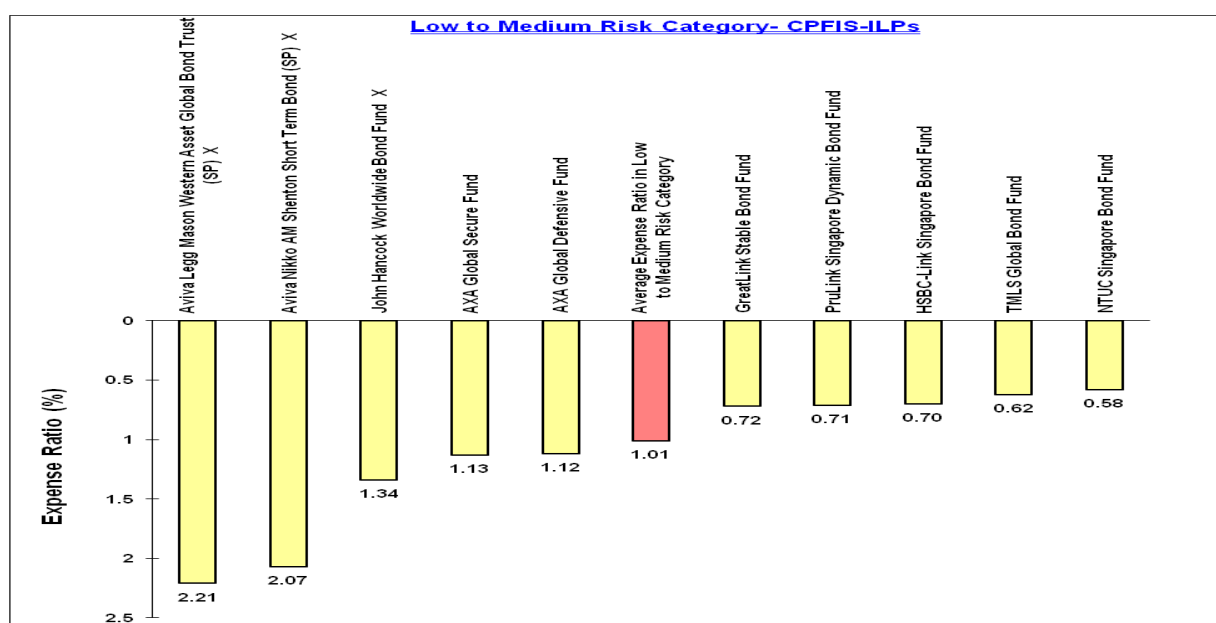
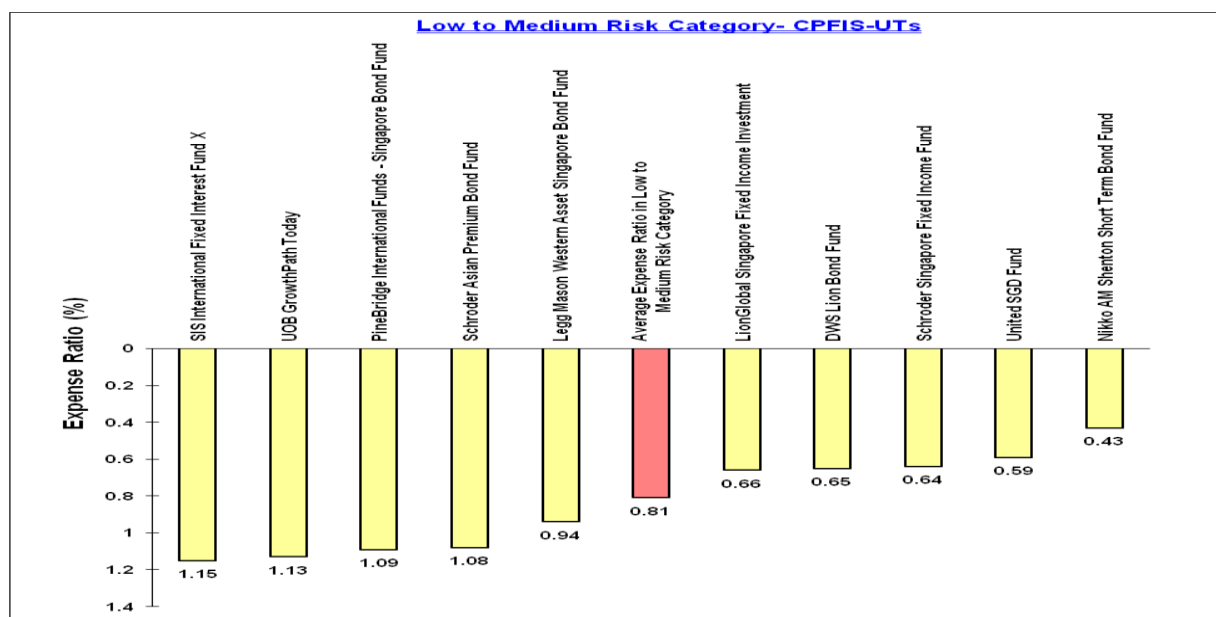
CPFIS-Included Unit Trusts & Investment-linked Insurance Products



* The expense ratios of Aviva's ILPs include all expenses and costs necessary to issue and maintain the ILPs. Unlike other ILPs, Aviva's ILPs do not charge an upfront sales charge, mortality fee, policy fee, bid-offer spread and switching fee separately from their management fee.

C) Low to Medium Risk Category

CPFIS-Included Unit Trusts & Investment-linked Insurance Products



* The expense ratios of Aviva's ILPs include all expenses and costs necessary to issue and maintain the ILPs. Unlike other ILPs, Aviva's ILPs do not charge an upfront sales charge, mortality fee, policy fee, bid-offer spread and switching fee separately from their management fee.

1. Closed-end funds are excluded from the computation as their management fees are generally charged upfront.
2. Fixed term funds are excluded from the expense ratio rankings
3. All the expense ratios are in percentages (%).

5. ANNEX A: SUPPORTING TABLES

CPFIS-Included Unit Trusts

Singapore Unit Trust	Sharpe Ratio ¹ (3Year)	Annualised Monthly Return SGD % (3Year)	Annualised Excess Return ² SGD % (3Year)	Annualised Monthly Risk SGD % (3Year)	Expense Ratio		06/30/2011 06/30/2012 1-Year Fund Performance	06/30/2009 06/30/2012 3-Year Fund Performance	06/30/2007 06/30/2012 5-Year Fund Performance	CPFIS Risk Classification ³	Lipper Global Classification
					Date	Value					
Quadrant A											
Aberdeen Malaysian Equity Fund	0.52	23.02	4.67	9.60	30/9/2011	1.71	9.91	86.16	73.15	HR	Equity Malaysia
First State Asian Growth Fund	0.12	15.75	0.22	13.46	31/12/2011	1.82	-8.73	55.09	20.23	HR	Equity Asia Pacific Ex Japan
First State Regional China Fund	0.07	17.24	6.75	13.60	31/12/2011	1.78	-9.95	61.15	23.00	HR	Equity Greater China
LionGlobal Malaysia Fund	0.24	22.56	-1.23	12.22	31/12/2011	1.58	-1.45	84.08	42.64	HR	Equity Malaysia
PineBridge International Funds - Acorns of Asia											
Balanced Fund	0.08	14.69	(blank)	13.32	31/12/2011	1.64	-11.47	50.85	0.47	M-HR	Mixed Asset SGD Balanced
Eastspring Investments U.T. - Asian Balanced Fund	0.05	11.13	-1.31	7.89	31/12/2011	1.35	-6.89	37.23	2.68	M-HR	Mixed Asset SGD Balanced
First State Bridge	0.21	13.79	1.57	7.49	31/12/2011	1.49	-3.60	47.35	16.33	M-HR	Mixed Asset SGD Balanced
First State Dividend Advantage	0.13	15.52	-0.82	12.65	31/12/2011	1.76	-9.15	54.17	20.16	HR	Equity Asia Pacific Ex Japan
Schroder Asian Equity Yield Fund	0.15	15.15	(blank)	13.59	31/12/2011	2.10	-8.39	52.68	-2.10	HR	Equity Asia Pacific Ex Japan
Henderson Global Property Equities Fund	0.16	10.96	-1.20	13.55	30/12/2011	2.02	-9.18	36.62	-38.41	HR	Equity Sector Real Est Global
Aberdeen Asian Smaller Companies Fund	0.31	23.94	3.37	13.04	30/9/2011	1.80	-10.09	90.40	33.97	HR	Equity Asia Pacific Sm&Mid Cap
Quadrant B											
Aberdeen Indonesia Equity Fund	0.33	40.46	-10.35	17.15	30/9/2011	1.72	-1.07	177.11	83.86	HR	Equity Indonesia
Aberdeen Pacific Equity Fund	0.17	19.84	4.92	14.43	30/9/2011	1.79	-11.95	72.11	12.71	HR	Equity Asia Pacific Ex Japan
Aberdeen Singapore Equity Fund	0.16	17.11	3.35	16.02	30/9/2011	1.67	-15.83	60.60	11.76	HR	Equity Singapore
Aberdeen Thailand Equity Fund	0.38	32.63	2.35	16.50	30/9/2011	1.69	4.42	133.29	51.59	HR	Equity Thailand
Nikko AM Shenton Thrift Fund	0.10	16.22	2.20	18.49	31/12/2011	0.83	-19.77	56.98	-14.52	HR	Equity Singapore
Legg Mason Western Asset SE Asia Special Situations Trust											
Henderson Global Technology Fund	0.13	16.14	1.00	15.37	31/12/2011	1.87	-2.08	56.67	3.68	HR	Equity Sector Information Tech
LionGlobal Singapore/Malaysia Fund	0.16	21.82	1.79	15.39	31/12/2011	1.42	-10.97	80.77	10.22	HR	Equity Malaysia/Singapore
LionGlobal Singapore Trust Fund	0.06	13.84	-3.22	19.07	31/12/2011	1.48	-22.76	47.52	-11.88	HR	Equity Singapore
LionGlobal Thailand Fund	0.19	30.69	-6.21	21.91	31/12/2011	1.60	-5.73	123.21	50.06	HR	Equity Thailand
Schroder Asian Growth Fund	0.16	22.26	8.19	16.13	31/12/2011	1.29	-10.88	82.75	6.59	HR	Equity Asia Pacific Ex Japan
Schroder Emerging Markets Fund	0.00	12.40	-1.16	17.12	31/12/2011	2.11	-16.82	42.00	-10.77	HR	Equity Emerging Mkts Global
Schroder Global Smaller Companies Fund	0.05	11.04	-1.98	13.98	31/12/2011	2.23	-9.39	36.93	-20.37	HR	Equity Global Sm&Mid Cap
Schroder Singapore Trust	0.10	15.30	3.95	17.47	31/12/2011	1.23	-16.31	53.28	1.42	HR	Equity Singapore
United Singapore Growth Fund	0.09	16.59	-2.39	17.28	31/12/2011	1.26	-17.08	58.50	-8.75	HR	Equity Singapore
Fidelity Funds-America Fund	0.11	10.91	1.73	14.31	31/10/2011	1.91	-2.57	36.43	-19.05	HR	Equity US
Fidelity Funds-Asian Special Situations Fund	0.06	13.99	-2.25	16.25	31/10/2011	1.97	-15.75	48.12	2.72	HR	Equity Asia Pacific Ex Japan
Fidelity Funds-Greater China Fund	-0.01	11.40	0.03	16.49	31/10/2011	1.98	-18.92	38.25	4.82	HR	Equity Greater China
Fidelity Funds-Southeast Asia Fund	0.05	15.10	-0.75	18.70	31/10/2011	1.95	-17.14	52.49	8.44	HR	Equity Asia Pacific Ex Japan
Eastspring Investments U.T. - Global Technology Fund											
APS Alpha Fund	0.09	23.86	(blank)	17.16	31/3/2012	0.51	-14.93	90.00	-4.20	HR	Equity Asia Pacific Ex Japan
Amundi Opportunities-Amundi Singapore Dividend Growth											
Aberdeen India Opportunities Fund	0.12	16.26	0.03	17.58	30/11/2011	1.47	-16.59	57.13	1.12	HR	Equity Singapore
Aberdeen India Opportunities Fund	0.07	17.90	7.77	19.81	30/9/2011	1.91	-25.31	63.89	5.24	HR	Equity India
Eastspring Investments U.T. - Dragon Peacock Fund	-0.08	11.55	1.43	19.09	31/12/2011	1.64	-27.93	38.79	-5.03	HR	Equity Emerging Mkts Asia
Nikko AM Shenton Global Property Securities Fund	0.25	12.14	(blank)	15.60	31/12/2011	1.75	-2.22	41.02	-38.91	HR	Equity Sector Real Est Global
Aberdeen Global Emerging Markets Fund	0.14	21.53	6.96	15.35	30/9/2011	1.80	-10.94	79.51	24.64	HR	Equity Emerging Mkts Global
First State Global Resources Fund	-0.02	18.77	0.50	24.79	31/12/2011	1.66	-25.52	67.53	4.06	HR	Equity Sector Natural Resource
Eastspring Investments U.T. - Global Basics Fund	0.05	13.65	(blank)	16.77	31/12/2011	1.76	-12.09	46.79	-10.88	HR	Equity Global
Schroder Emerging Europe Fund	0.05	15.85	1.00	23.85	31/12/2011	2.19	-21.74	55.49	-34.66	HR	Equity Emerging Mkts Europe
Schroder BRIC Fund	-0.08	10.66	-4.30	17.46	31/12/2011	2.06	-21.49	35.50	-17.17	HR	Equity Emerging Mkts Global
SIS International Property Securities Fund	0.24	13.00	-2.10	15.35	31/1/2012	1.94	0.16	44.31	-45.94	HR	Equity Sector Real Est Global
Fidelity Funds-Southeast Asia Fund	0.05	15.11	-0.73	18.70	31/10/2011	1.96	-17.39	52.54	8.39	HR	Equity Asia Pacific Ex Japan
Fidelity Funds-America Fund	0.11	10.89	1.71	14.30	31/10/2011	1.91	-2.93	36.35	-19.28	HR	Equity US

Singapore Unit Trust	Sharpe Ratio ¹ (3Year)	Annualised Monthly Return SGD % (3Year)	Annualised Excess Return ² SGD % (3Year)	Annualised Monthly Risk SGD % (3Year)	Expense Ratio		06/30/2011 06/30/2012 1-Year Fund Performance	06/30/2009 06/30/2012 3-Year Fund Performance	06/30/2007 06/30/2012 5-Year Fund Performance	CPFIS Risk Classification ³	Lipper Global Classification
					Date	Value					
FTIF - Templeton Emerging Markets Fund	0.03	14.76	-2.05	17.58	30/12/2011	2.48	-14.90	51.12	(blank)	HR	Equity Emerging Mkts Global
FTIF - Templeton Asian Growth Fund	0.12	26.73	14.25	17.75	30/12/2011	2.21	-13.94	103.54	(blank)	HR	Equity Asia Pacific Ex Japan
FTIF - Templeton China Fund	-0.04	12.40	0.83	16.84	30/12/2011	2.45	-17.41	42.00	(blank)	HR	Equity Greater China
FTIF - Templeton Thailand Fund	0.21	29.95	-8.72	21.66	30/12/2011	2.48	-4.62	119.43	(blank)	HR	Equity Thailand
FTIF - Franklin U.S. Opportunities Fund	0.13	14.20	0.23	15.32	30/12/2011	1.80	-2.82	48.92	(blank)	HR	Equity US
Fidelity Funds-Asian Special Situations Fund	0.06	14.01	-2.22	16.26	31/10/2011	1.95	-15.98	48.21	(blank)	HR	Equity Asia Pacific Ex Japan
Fidelity Funds-Greater China Fund	-0.01	11.39	0.02	16.54	31/10/2011	1.95	-19.24	38.20	(blank)	HR	Equity Greater China
Quadrant C											
Legg Mason Western Asset Singapore Bond Fund	0.19	3.50	(blank)	2.48	30/9/2011	0.94	5.57	10.86	20.88	L-MR	Bond SGD
Nikko AM Shenton Eight Portfolios-Eight Portfolio D	0.04	6.60	(blank)	10.56	31/12/2011	2.16	-5.96	21.13	-21.41	HR	Mixed Asset SGD Aggressive
Nikko AM Shenton Eight Portfolios-Eight Portfolio E	0.03	7.54	(blank)	13.27	31/12/2011	2.18	-8.26	24.38	-28.71	HR	Equity Global
Nikko AM Shenton Japan Fund	-0.13	-2.65	-1.14	13.77	31/12/2011	1.19	-15.03	-7.75	-42.99	HR	Equity Japan
DWS Lion Bond Fund	0.26	3.33	(blank)	1.50	31/12/2011	0.65	1.86	10.34	15.26	L-MR	Bond Global
DWS Premier Select Trust	0.06	6.73	-1.27	7.47	31/12/2011	1.34	-7.83	21.58	-6.07	M-HR	Mixed Asset SGD Balanced
Legg Mason Western Asset Global Bond Trust	-0.10	-0.17	(blank)	4.94	30/9/2011	0.81	7.25	-0.50	6.68	L-MR	Bond Global
Nikko AM Shenton Horizon Investment Funds-Horizon US Equity Fund	0.06	8.55	(blank)	13.61	31/12/2011	2.04	-1.90	27.89	-23.01	HR	Equity US
LionGlobal Japan Growth Fund	-0.05	5.71	8.64	11.69	31/12/2011	1.89	-9.28	18.13	-36.72	HR	Equity Japan
LionGlobal Singapore Balanced Fund	0.09	9.48	(blank)	10.05	31/12/2011	1.45	-11.42	31.23	2.66	M-HR	Mixed Asset SGD Balanced
United SGD Fund	0.35	6.06	5.78	2.23	31/12/2011	0.59	0.95	19.29	22.46	L-MR	Bond SGD
LionGlobal Japan Fund	-0.10	1.24	2.64	12.71	31/12/2011	1.73	-14.23	3.76	-44.47	HR	Equity Japan
United Asia Top-50 Fund	-0.13	0.84	-4.87	13.49	31/12/2011	2.09	-22.44	2.54	-41.89	HR	Equity Asia Pacific
United International Growth Fund	0.00	3.35	-5.68	12.90	31/12/2011	1.34	-10.00	10.40	-30.72	HR	Equity Global
United Millennium Trust I	-0.04	2.67	-2.12	7.20	31/12/2011	3.80	2.12	8.22	-8.08	M-HR	Mixed Asset SGD Balanced
United Millennium Trust II	-0.04	3.14	-3.14	8.01	31/12/2011	3.25	-3.76	9.71	-9.15	M-HR	Mixed Asset SGD Balanced
United Millennium Trust III	-0.03	3.60	-4.05	10.26	31/12/2011	3.27	-3.15	11.20	-23.99	HR	Mixed Asset SGD Aggressive
SIS International Fixed Interest Fund	-0.17	1.06	-2.09	5.53	31/1/2012	1.15	3.53	3.21	6.53	L-MR	Bond Global
Schroder Multi-Asset Revolution	0.12	7.99	2.72	5.96	31/12/2011	1.49	-3.06	25.92	0.94	M-HR	Mixed Asset SGD Balanced
Aberdeen Global Opportunities Fund	0.08	9.34	1.68	13.17	30/9/2011	1.91	-1.27	30.71	-14.52	HR	Equity Global
Nikko AM Shenton Short Term Bond Fund	0.29	3.23	2.77	0.74	31/12/2011	0.43	1.53	10.01	9.32	L-MR	Bond SGD
United Global Healthcare Fund	0.16	7.72	1.49	10.85	31/12/2011	2.40	6.22	24.98	-3.21	HR	Equity Sector Pharma&Health
LionGlobal Singapore Fixed Income Investment	0.39	4.85	(blank)	1.92	31/12/2011	0.66	5.26	15.26	21.37	L-MR	Bond SGD
Eastspring Investments U.T. - Protected Global Titans Fund (SS)	-0.45	0.23	-2.86	1.63	31/12/2011	0.67	0.17	0.70	6.26	L-MR	Protected
PineBridge International Funds - Singapore Bond Fund	0.48	7.39	(blank)	2.53	31/12/2011	1.09	4.26	23.84	15.80	L-MR	Bond SGD
SIS Growth Fund	0.01	4.75	(blank)	10.70	31/1/2012	1.60	-5.46	14.94	-30.94	M-HR	Mixed Asset USD Bal - Global
UOB GrowthPath Today	0.22	6.20	0.98	2.90	31/12/2011	1.13	2.62	19.78	12.28	L-MR	Target Maturity Other
UOB GrowthPath 2020	0.11	6.38	-0.11	4.69	31/12/2011	1.37	-0.28	20.38	0.34	M-HR	Target Maturity Other
UOB GrowthPath 2030	0.05	6.16	-0.93	6.10	31/12/2011	1.53	-3.07	19.63	-5.32	M-HR	Target Maturity Other
UOB GrowthPath 2040	0.05	6.58	-0.92	7.35	31/12/2011	1.35	-3.91	21.06	-10.16	M-HR	Target Maturity Other
United Singapore Bond Fund	0.46	6.46	3.49	2.35	31/12/2011	0.77	7.32	20.67	23.15	L-MR	Bond SGD
AllianceBernstein - Global Conservative Portfolio	-0.13	2.01	0.16	5.28	31/8/2011	1.62	-2.83	6.15	-17.48	M-HR	Mixed Asset USD Conservative
AllianceBernstein - Global Conservative Portfolio	-0.13	2.02	0.18	5.27	31/8/2011	1.62	-2.79	6.20	-17.42	M-HR	Mixed Asset USD Conservative
Allianz Global Investors Premier Funds - Allianz Global High Payout Fund	0.03	5.22	(blank)	10.24	31/12/2011	1.94	-3.44	16.50	-25.52	HR	Equity Global
Schroder Asian Premium Bond Fund	0.32	5.45	(blank)	2.95	31/12/2011	1.08	2.45	17.25	(blank)	L-MR	Bond Asia Pacific
Eastspring Investments U.T. - Asian Infrastructure Equity Fund	-0.07	6.70	(blank)	13.03	31/12/2011	1.94	-16.13	21.46	(blank)	HR	Equity Asia Pacific Ex Japan
Eastspring Investments U.T. - Global Balanced Fund	0.04	8.18	(blank)	9.77	31/12/2011	1.65	-4.60	26.60	(blank)	M-HR	Mixed Asset SGD Balanced

Singapore Unit Trust	Sharpe Ratio ¹ (3Year)	Annualised Monthly Return SGD % (3Year)	Annualised Excess Return ² SGD % (3Year)	Annualised Monthly Risk SGD % (3Year)	Expense Ratio		06/30/2011 06/30/2012 1-Year Fund Performance	06/30/2009 06/30/2012 3-Year Fund Performance	06/30/2007 06/30/2012 5-Year Fund Performance	CPFIS Risk Classification ³	Lipper Global Classification
					Date	Value					
AllianceBernstein - International Health Care Portfolio	0.04	1.70	-5.18	11.99	30/11/2011	2.24	0.99	5.18	(blank)	HR	Equity Sector Pharma&Health
FTIF - Templeton Global Balanced Fund	0.00	3.10	-3.32	12.35	30/12/2011	1.67	-4.68	9.61	(blank)	M-HR	Mixed Asset USD Bal - Global
Quadrant D											
Legg Mason Western Asset Asian Enterprise Trust	-0.08	9.62	(blank)	21.86	30/9/2011	1.62	-30.63	31.71	-27.15	HR	Equity Asia Pacific Ex Japan
Henderson European Fund	-0.08	0.52	-1.28	18.22	30/12/2011	1.99	-8.45	1.56	-45.38	HR	Equity Europe ex UK
Nikko AM Shenton Horizon Investment Funds-Horizon European Equity Fund	-0.06	0.39	(blank)	21.46	31/12/2011	2.00	-17.35	1.16	-43.67	HR	Equity Europe ex UK
Nikko AM Shenton Horizon Investment Funds-Horizon Global Equity Fund	0.01	6.98	(blank)	14.40	31/12/2011	1.62	-7.33	22.42	-30.87	HR	Equity Global
LionGlobal China Growth Fund	-0.09	6.69	-5.92	16.48	31/12/2011	1.50	-21.80	21.43	-11.94	HR	Equity Greater China
LionGlobal Asia Pacific Fund	-0.05	7.11	-12.30	17.43	31/12/2011	1.77	-21.81	22.88	-17.06	HR	Equity Asia Pacific Ex Japan
LionGlobal India Fund	-0.08	7.91	-4.55	23.16	31/12/2011	1.65	-36.08	25.67	-16.26	HR	Equity India
Schroder European Large Cap Equity Fund	-0.02	3.56	-1.38	18.87	31/12/2011	2.16	-10.68	11.07	-35.03	HR	Equity Europe
United Asia Fund - Class SGD	-0.02	9.16	-8.99	18.62	31/12/2011	1.65	-28.04	30.09	-18.37	HR	Equity Asia Pacific Ex Japan
United Global Financials Fund	0.00	3.95	3.77	16.52	31/12/2011	1.98	-9.05	12.32	-48.18	HR	Equity Sector Banks&Financial
United Global Technology Fund	0.01	7.52	-8.51	17.90	31/12/2011	3.03	-15.36	24.31	-17.72	HR	Equity Sector Information Tech
SIS High Growth Fund	0.02	5.04	(blank)	13.94	31/1/2012	1.92	-8.94	15.88	-40.21	HR	Equity Global
SIS International Equity Fund	0.00	4.75	-2.94	14.80	31/1/2012	1.95	-9.49	14.95	-40.32	HR	Equity Global
Schroder Greater China Fund	-0.05	10.26	1.99	17.32	31/12/2011	2.05	-20.57	34.03	-7.29	HR	Equity Greater China
Eastspring Investments U.T. - Pan European Fund	-0.08	2.05	-3.04	18.27	31/12/2011	1.76	-14.35	6.29	-40.35	HR	Equity Europe
HSBC Global Investment Funds-Indian Equity Fund	-0.10	8.70	-1.19	26.53	30/9/2011	1.91	-45.09	28.45	-36.57	HR	Equity India
DWS China Equity Fund	-0.11	6.44	-1.64	18.26	31/12/2011	1.59	-20.93	20.60	4.18	HR	Equity China
United Global Real Estate Securities Fund	0.12	6.16	-6.69	13.99	31/12/2011	2.80	-7.85	19.64	-45.47	HR	Equity Sector Real Est Global
AllianceBernstein - Global Equity Blend Portfolio	-0.05	1.81	-6.39	15.60	31/8/2011	2.06	-13.95	5.52	-50.13	HR	Equity Global
Eastspring Investments U.T. - Global Leaders Fund	0.00	7.60	-1.32	14.39	31/12/2011	1.94	-12.14	24.59	(blank)	HR	Equity Global
AllianceBernstein - Global Growth Trends Portfolio	-0.01	3.24	-4.71	14.79	31/8/2011	2.07	-11.38	10.04	-46.24	HR	Equity Global
DWS Global Themes Equity Fund	-0.01	6.65	-0.74	14.55	31/12/2011	1.47	-14.88	21.30	-39.08	HR	Equity Global
Fidelity Funds-China Focus Fund	-0.09	8.24	(blank)	15.83	31/10/2011	1.94	-19.43	26.82	(blank)	HR	Equity China
FTIF - Templeton Global Equity Income Fund	-0.04	2.41	-7.60	16.37	30/12/2011	1.86	-9.39	7.39	(blank)	HR	Equity Global Income
FTIF - Templeton Global Fund	-0.02	3.52	-6.24	17.10	30/12/2011	1.84	-10.35	10.92	(blank)	HR	Equity Global
FTIF - Templeton Korea Fund	0.00	9.97	-16.00	25.67	30/12/2011	2.52	-25.53	33.00	(blank)	HR	Equity Korea
FTIF - Franklin Biotechnology Discovery Fund	0.23	8.96	-1.50	14.83	30/12/2011	1.88	10.68	29.38	(blank)	HR	Equity Sector Biotechnology
FTIF - Templeton European Fund	-0.05	0.25	-5.04	19.28	30/12/2011	1.86	-9.62	0.77	(blank)	HR	Equity Europe
HSBC Amanah Global Equity	0.10	10.24	0.29	13.96	30/9/2011	0.58	-4.25	33.99	(blank)	HR	Equity Global
HSBC Amanah Global Equity	0.10	10.25	0.29	13.93	30/9/2011	0.58	-4.25	33.99	(blank)	HR	Equity Global

Note 1: Sharpe Ratio is a measurement of a fund's annualized return that is in excess of the risk-free rate (a theoretical interest rate that would be returned on an investment that is completely free of risk) and adjusted for the fund's volatility. The calculation is as follows: (Fund Return - Risk-Free Return)/Fund Standard Deviation. From this formula, it can be derived that the higher a fund's Sharpe ratio, the better its returns relative to the amount of investment risk it has taken.

Note 2: Annualized Excess Return is a fund's excess return relative to its benchmark, on an annualised basis. Benchmarks may either be supplied to Lipper by the fund's managers, or be assigned on a case-by-case basis in accordance with the fund's stated mandate and Lipper Global Classifications and Methodology.

Note 3: HR=Higher Risk, M-HR=Medium to High Risk, L-MR=Low to Medium Risk, LR=Lower Risk

CPFIS-Included ILPs

Singapore ILPs	Sharpe Ratio ¹ (3Year)	Annualised Monthly Return SGD % (3Year)	Annualised Excess Return ² SGD % (3Year)	Annualised Monthly Risk SGD % (3Year)	Expense Ratio		06/30/2011 06/30/2012 1-Year Fund Performance	06/30/2009 06/30/2012 3-Year Fund Performance	06/30/2007 06/30/2012 5-Year Fund Performance	CPFIS Risk Classification ³	Lipper Global Classification
					Date	Value					
Quadrant A											
Aviva MM Balanced Growth	0.08	10.98	(blank)	10.06	31/3/2012	1.12	-4.70	36.68	7.88	M-HR	Mixed Asset SGD Balanced
NTUC Prime Fund	0.07	10.26	(blank)	10.70	31/12/2011	0.93	-9.62	34.05	14.65	M-HR	Mixed Asset SGD Balanced
NTUC Singapore Managed Fund	0.10	11.18	(blank)	11.39	31/12/2011	0.96	-10.19	37.43	14.26	M-HR	Mixed Asset SGD Balanced
NTUC Asia Managed Fund	0.17	14.72	(blank)	11.14	31/12/2011	1.35	-7.14	50.96	23.66	M-HR	Mixed Asset SGD Aggressive
Manulife Golden Balanced Growth Fund	0.10	9.81	(blank)	9.77	31/12/2011	1.31	-7.38	32.40	7.14	M-HR	Mixed Asset SGD Balanced
UOB Life FOF Global Healthcare Fund	0.16	7.72	(blank)	10.85	31/12/2011	2.40	6.22	24.98	-3.21	HR	Equity Sector Pharma&Health
GreatLink Global Bond Fund	0.21	8.06	(blank)	4.54	30/9/2011	0.89	8.00	26.18	25.73	L-MR	Bond Global
GreatLink LifeStyle Progressive Portfolio	0.04	7.92	(blank)	10.94	30/9/2011	1.55	-7.48	25.68	-15.63	HR	Mixed Asset SGD Aggressive
Aviva Balanced Growth (SP)	0.06	9.86	(blank)	10.03	31/3/2012	2.13	-5.74	32.58	2.42	M-HR	Mixed Asset SGD Balanced
PruLink Asian Reach Managed Fund	0.05	11.07	-1.38	7.89	31/12/2011	1.41	-6.95	37.01	2.72	M-HR	Mixed Asset SGD Balanced
PruLink Adapt 2015	0.18	8.05	(blank)	4.89	31/12/2011	1.66	0.53	26.14	3.27	M-HR	Target Maturity Other
PruLink Adapt 2025	0.11	8.68	(blank)	8.19	31/12/2011	1.68	-4.11	28.38	-8.25	M-HR	Target Maturity Other
PruLink Adapt 2035	0.07	8.41	(blank)	10.15	31/12/2011	1.71	-6.75	27.42	-15.93	HR	Target Maturity Other
Quadrant B											
AXA Value Growth Fund	0.06	12.42	(blank)	14.30	31/12/2011	1.92	-13.06	42.08	2.66	HR	Equity Asia Pacific Ex Japan
Aviva MM Capital Growth	0.09	15.16	(blank)	14.27	31/3/2012	1.12	-7.47	52.72	0.78	HR	Equity Asia Pacific Ex Japan
PruLink Global Equity Fund	0.08	8.11	0.26	12.67	31/12/2011	1.75	-1.28	26.37	-28.74	HR	Equity Global
PruLink Asian Equity Fund	-0.01	14.05	-2.07	17.81	31/12/2011	1.55	-21.01	48.35	-15.67	HR	Equity Asia Pacific Ex Japan
PruLink Singapore Managed Fund	0.10	12.10	(blank)	12.56	31/12/2011	1.32	-11.51	40.87	3.67	M-HR	Mixed Asset SGD Aggressive
HSBC-Link Ethical Global Equity Fund	0.07	10.58	2.93	13.94	31/12/2011	1.91	-5.34	35.20	-20.65	HR	Equity Global
AXA Fortress Fund	0.20	19.48	1.66	14.40	31/12/2011	1.95	-10.38	70.55	11.27	HR	Equity Singapore
UOB LifeLink Asia Fund	-0.01	9.26	(blank)	18.77	31/12/2011	1.63	-27.89	30.42	-18.82	HR	Equity Asia Pacific Ex Japan
UOB LifeLink Growth Fund	0.10	17.04	(blank)	17.45	31/12/2011	1.28	-17.07	60.33	-7.89	HR	Equity Singapore
NTUC Takaful Fund	0.12	14.38	(blank)	13.01	31/12/2011	1.13	-3.25	49.66	1.40	HR	Equity Global
NTUC Global Technology Fund	0.18	25.06	13.68	19.05	31/12/2011	1.31	-1.48	95.59	11.30	HR	Equity Sector Information Tech
John Hancock Pacific Harvest Fund	-0.06	8.80	(blank)	16.20	31/12/2011	1.80	-20.72	28.80	-9.34	M-HR	Mixed Asset SGD Aggressive
Manulife Golden Asia Growth Fund	-0.08	9.60	-8.93	21.85	31/12/2011	1.63	-30.69	31.66	-26.61	HR	Equity Asia Pacific Sm&Mid Cap
PruLink Global Technology Fund	0.13	16.68	3.14	15.72	31/12/2011	1.74	-1.96	58.87	-12.63	HR	Equity Sector Information Tech
Manulife Golden Singapore Growth Fund	0.10	15.43	-1.08	16.93	31/12/2011	1.80	-16.87	53.79	-1.52	HR	Equity Singapore
Manulife Golden S.E.A. Special Situations Fund	0.07	24.94	(blank)	20.52	31/12/2011	1.64	-21.67	95.05	7.91	HR	Equity ASEAN
AIA Growth Fund	0.09	12.79	(blank)	13.05	31/12/2011	1.31	-12.04	43.50	1.50	M-HR	Mixed Asset SGD Aggressive
AIA Regional Equity Fund	0.03	14.27	-1.87	17.09	31/12/2011	0.94	-13.62	49.22	-13.93	HR	Equity Emerging Mkts Asia
AIA Global Technology Fund	0.14	18.37	3.03	16.80	31/12/2011	1.88	-4.45	65.87	10.48	HR	Equity Sector Information Tech
AIA Acorns of Asia Fund	0.08	14.64	(blank)	13.31	31/12/2011	1.69	-11.55	50.65	0.31	M-HR	Mixed Asset SGD Balanced
TMLS Asian Equity Fund	0.17	19.49	4.46	13.88	31/12/2011	1.86	-11.85	70.61	12.95	HR	Equity Asia Pacific Ex Japan
UOB Life FOF Growth Fund	0.08	15.73	(blank)	17.31	31/12/2011	1.26	-17.54	55.00	-11.79	HR	Equity Singapore

Singapore ILPs	Sharpe Ratio ¹ (3Year)	Annualised Monthly Return SGD % (3Year)	Annualised Excess Return ² SGD % (3Year)	Annualised Monthly Risk SGD % (3Year)	Expense Ratio		06/30/2011 06/30/2012 1-Year Fund Performance	06/30/2009 06/30/2012 3-Year Fund Performance	06/30/2007 06/30/2012 5-Year Fund Performance	CPFIS Risk Classification ³	Lipper Global Classification
					Date	Value					
UOB Life FOF Asia Fund	-0.02	9.16	(blank)	18.62	31/12/2011	1.65	-28.04	30.09	-18.37	HR	Equity Asia Pacific Ex Japan
GreatLink ASEAN Growth Fund	0.17	23.40	(blank)	14.83	30/9/2011	1.54	-9.48	87.90	23.67	HR	Equity ASEAN
GreatLink Global Technology Fund	0.16	17.51	3.49	16.81	30/9/2011	1.67	-2.37	62.28	-11.90	HR	Equity Sector Information Tech
GreatLink Far East ex Japan Equities Fund	-0.04	9.96	-7.85	17.17	30/9/2011	1.55	-20.64	32.97	-12.86	HR	Equity Asia Pacific Ex Japan
GreatLink Singapore Equities Fund	0.06	13.90	-3.14	18.64	30/9/2011	1.55	-22.17	47.76	-6.69	HR	Equity Singapore
Aviva Capital Growth (SP)	0.07	14.00	(blank)	14.27	31/3/2012	2.12	-8.44	48.15	-4.18	HR	Equity Asia Pacific Ex Japan
Aviva Emerging Countries Growth (SP)	-0.04	11.00	-7.32	17.70	31/3/2012	2.84	-21.78	36.75	-26.89	HR	Equity Emerging Mkts Global
NTUC Singapore Equity Fund	0.09	14.91	(blank)	16.73	31/12/2011	0.73	-17.07	51.73	-3.51	HR	Equity Singapore
AXA Fortress Fund	0.19	19.42	1.57	14.00	31/12/2011	1.95	-9.84	70.29	9.01	HR	Equity Singapore
Manulife Lifestyle Portfolios - Aggressive	-0.02	9.52	(blank)	15.64	31/12/2011	1.84	-18.93	31.35	-18.46	HR	Equity Global
HSBC-Link India Equity Fund	-0.11	8.33	-1.64	26.92	31/12/2011	1.92	-44.85	27.14	-36.69	HR	Equity India
HSBC-Link Ethical Asia Equity Fund	0.10	15.42	(blank)	14.73	31/12/2011	1.79	-9.61	53.78	-3.50	HR	Equity Asia Pacific Ex Japan
Prulink China-India Fund	-0.08	11.57	1.46	19.09	31/12/2011	1.65	-27.97	38.88	-4.86	HR	Equity Emerging Mkts Asia
AXA Asian Growth Fund	0.06	12.40	(blank)	14.32	31/12/2011	1.95	-13.10	42.00	2.55	HR	Equity Asia Pacific Ex Japan
Manulife India Equity Fund	0.03	16.71	6.35	19.30	31/12/2011	1.94	-25.35	58.99	-12.72	HR	Equity India
Aviva Legg Mason Western Asset Asian Enterprise Trust (SP)	-0.10	8.85	-10.02	21.42	31/3/2012	2.36	-31.36	28.96	-29.82	HR	Equity Asia Pacific Sm&Mid Cap
PruLink Emerging Markets Fund	0.04	13.32	-4.04	17.64	31/12/2011	1.86	-17.73	45.52	-16.90	HR	Equity Emerging Mkts Global
PruLink America Fund	0.10	10.36	0.23	14.26	31/12/2011	1.95	-3.08	34.42	-20.61	HR	Equity US
GreatLink Global Real Estate Securities Fund	0.18	10.72	3.31	13.80	30/9/2011	1.66	-5.61	35.72	-34.26	HR	Equity Sector Real Est Global
AIA India Balanced Fund	0.10	12.70	(blank)	12.46	31/12/2011	1.75	-15.11	43.13	8.54	M-HR	Mixed Asset SGD Balanced
AIA India Opportunities Fund	0.07	17.84	9.13	19.86	31/12/2011	1.95	-25.47	63.62	2.41	HR	Equity India
TMLS Global Equity Fund	0.09	9.10	1.40	12.66	31/12/2011	1.74	-1.25	29.85	-15.49	HR	Equity Global
AXA Singapore Equity Fund	0.16	17.52	-1.08	16.12	31/12/2011	1.95	-15.85	62.31	11.04	HR	Equity Singapore
AXA Pacific Equity Fund	0.17	19.55	4.54	14.37	31/12/2011	1.93	-12.01	70.86	10.70	HR	Equity Asia Pacific Ex Japan
Aviva Aberdeen Pacific Equity (SP)	0.14	18.46	3.11	14.42	31/3/2012	3.07	-13.52	66.24	6.52	HR	Equity Asia Pacific Ex Japan
HSBC-Link Emerging Markets Equity Fund	0.00	12.77	-0.68	16.68	31/12/2011	2.16	-16.88	43.41	-11.18	HR	Equity Emerging Mkts Global
GreatLink Lion India Fund	-0.08	7.90	-4.57	23.14	30/9/2011	1.68	-36.05	25.61	(blank)	HR	Equity India
AIA Emerging Markets Equity Fund	-0.07	7.85	-11.35	17.59	31/12/2011	1.35	-25.30	25.46	-26.84	HR	Equity Emerging Mkts Global
Manulife Pacific Equity Fund	0.17	19.82	4.90	14.43	31/12/2011	1.82	-12.02	72.02	12.77	HR	Equity Asia Pacific Ex Japan
Manulife Global Emerging Markets Fund	0.14	21.42	6.81	15.33	31/12/2011	1.83	-11.02	78.99	24.27	HR	Equity Emerging Mkts Global
AIA Global Resources Fund	-0.02	18.71	-3.14	24.81	31/12/2011	1.71	-25.84	67.28	(blank)	HR	Equity Sector Natural Resource
PruLink Global Basics Fund	0.05	13.67	(blank)	16.77	31/12/2011	1.76	-12.08	46.89	-10.86	HR	Equity Global
PruLink Global Property Securities Fund	0.24	11.89	-3.59	15.31	31/12/2011	1.88	0.09	40.07	(blank)	HR	Equity Sector Real Est Global

Singapore ILPs	Sharpe Ratio ¹ (3Year)	Annualised Monthly Return SGD % (3Year)	Annualised Excess Return ² SGD % (3Year)	Annualised Monthly Risk SGD % (3Year)	Expense Ratio		06/30/2011 06/30/2012 1-Year Fund Performance	06/30/2009 06/30/2012 3-Year Fund Performance	06/30/2007 06/30/2012 5-Year Fund Performance	CPFIS Risk Classification ³	Lipper Global Classification
					Date	Value					
Quadrant C											
Aviva MM Income Growth	0.06	6.18	(blank)	5.51	31/3/2012	1.12	-1.48	19.72	10.89	M-HR	Mixed Asset SGD Conservative
PruLink Global Bond Fund	-0.05	1.48	0.43	6.69	31/12/2011	0.77	7.66	4.52	18.56	L-MR	Bond Global
PruLink Global Managed Fund	0.04	3.51	-2.26	6.33	31/12/2011	1.55	-3.15	10.90	-10.48	M-HR	Mixed Asset SGD Balanced
PruLink Singapore Cash Fund	-3.51	0.86	0.76	0.15	31/12/2011	0.31	0.43	2.61	7.45	LR	Money Market SGD
NTUC Singapore Bond Fund	0.28	3.96	(blank)	2.62	31/12/2011	0.58	6.95	12.36	25.42	L-MR	Bond SGD
John Hancock Worldwide Bond Fund	-0.13	-0.69	(blank)	4.95	31/12/2011	1.34	6.73	-2.06	4.23	L-MR	Bond Global
John Hancock Singapore Cash Fund	-8.16	0.18	0.07	0.08	31/12/2011	0.64	-0.14	0.53	4.63	LR	Money Market SGD
Manulife Golden International Bond Fund	-0.10	-0.20	(blank)	4.93	31/12/2011	0.84	7.22	-0.60	6.93	L-MR	Bond Global
John Hancock Global Balanced Fund	-0.06	1.22	(blank)	7.46	31/12/2011	1.93	-4.27	3.69	-19.03	M-HR	Mixed Asset SGD Balanced
HSBC-Link Premium Balanced Fund	0.04	6.39	-1.67	7.66	31/12/2011	1.54	-8.49	20.43	-8.11	M-HR	Mixed Asset SGD Balanced
Manulife Golden Global Balanced Fund	-0.04	1.57	(blank)	7.44	31/12/2011	1.61	-3.92	4.77	-17.36	M-HR	Mixed Asset SGD Balanced
PruLink Protected Global Titans Fund	-0.47	0.12	(blank)	1.63	31/12/2011	0.79	0.06	0.36	5.69	L-MR	Protected
AIA Regional Fixed Income Fund	0.42	6.67	(blank)	2.38	31/12/2011	0.90	3.76	21.38	16.64	L-MR	Bond SGD
AIA SS Money Market Fund	-5.12	-0.06	(blank)	0.15	31/12/2011	0.34	-0.10	-0.19	2.15	LR	Money Market SGD
AIA Global Balanced Fund	0.08	5.47	-0.07	8.61	31/12/2011	1.24	-3.17	17.33	-16.95	M-HR	Mixed Asset SGD Balanced
UOB Life FOF Millennium Trust I	-0.04	2.67	(blank)	7.20	31/12/2011	3.80	2.12	8.22	-8.08	M-HR	Mixed Asset SGD Balanced
UOB Life FOF Millennium Trust II	-0.04	3.14	(blank)	8.01	31/12/2011	3.25	-3.76	9.71	-9.15	M-HR	Mixed Asset SGD Balanced
UOB Life FOF Millennium Trust III	-0.03	3.60	(blank)	10.26	31/12/2011	3.27	-3.15	11.20	-23.99	HR	Mixed Asset SGD Aggressive
GreatLink Cash Fund	-2.68	0.74	0.64	0.20	30/9/2011	0.32	0.24	2.24	6.48	LR	Money Market SGD
GreatLink Global Supreme Fund	0.12	6.10	(blank)	5.73	30/9/2011	1.42	3.63	19.44	-1.32	M-HR	Mixed Asset SGD Balanced
GreatLink Global Optimum Fund	-0.06	2.51	(blank)	6.31	30/9/2011	1.40	-2.47	7.74	-15.07	M-HR	Mixed Asset SGD Balanced
AIA Portfolio 30	0.22	6.89	(blank)	4.50	31/12/2011	0.98	0.81	22.11	3.91	L-MR	Mixed Asset SGD Conservative
AIA Portfolio 50	0.08	5.00	(blank)	6.51	31/12/2011	1.16	-2.79	15.76	-7.14	M-HR	Mixed Asset SGD Balanced
AIA Portfolio 70	0.03	4.17	(blank)	8.96	31/12/2011	1.75	-6.06	13.02	-17.31	M-HR	Mixed Asset SGD Aggressive
GreatLink Stable Bond Fund	0.26	3.35	(blank)	1.51	30/9/2011	0.72	1.85	10.40	15.35	L-MR	Bond Global
GreatLink Lifestyle Secure Portfolio	0.23	7.56	(blank)	3.28	30/9/2011	1.01	2.73	24.44	16.51	M-HR	Mixed Asset SGD Conservative
GreatLink Lifestyle Steady Portfolio	0.12	7.18	(blank)	5.28	30/9/2011	1.20	-0.48	23.12	1.96	M-HR	Mixed Asset SGD Balanced
GreatLink Lifestyle Balanced Portfolio	0.06	7.36	(blank)	8.03	30/9/2011	1.37	-4.14	23.74	-6.67	M-HR	Mixed Asset SGD Balanced
John Hancock Adventurous Portfolio	-0.08	4.84	(blank)	10.94	31/12/2011	1.66	-13.16	15.22	-14.58	M-HR	Mixed Asset SGD Aggressive
John Hancock Balanced Portfolio	-0.08	3.49	(blank)	8.39	31/12/2011	1.68	-8.35	10.83	-12.82	M-HR	Mixed Asset SGD Balanced
John Hancock Cautious Portfolio	-0.13	0.37	(blank)	4.16	31/12/2011	1.52	3.00	1.12	-1.50	M-HR	Mixed Asset SGD Conservative
AXA Global Defensive Fund	-0.17	0.99	1.11	4.68	31/12/2011	1.12	3.52	3.00	-2.59	L-MR	Bond Global
AXA Global Secure Fund	-0.07	3.00	-0.47	5.25	31/12/2011	1.13	0.08	9.26	-10.20	L-MR	Mixed Asset SGD Conservative
AXA Global Balanced Fund	0.01	3.76	-1.21	7.18	31/12/2011	1.73	-2.19	11.73	-19.65	M-HR	Mixed Asset SGD Balanced
AXA Global Growth Fund	0.03	4.60	-1.78	9.89	31/12/2011	1.75	-4.55	14.46	-26.37	M-HR	Mixed Asset SGD Aggressive
HSBC-Link Ethical Managed Fund	-0.11	0.36	(blank)	8.56	31/12/2011	1.98	-7.11	1.07	-11.60	M-HR	Equity Global
HSBC-Link Singapore Bond Fund	0.26	3.30	3.01	1.46	31/12/2011	0.70	1.80	10.22	15.12	L-MR	Bond Global
Aviva Income Growth (SP)	0.01	5.14	(blank)	5.46	31/3/2012	2.12	-2.53	16.22	5.32	M-HR	Mixed Asset SGD Conservative
NTUC Global Managed Fund (Balanced)	0.14	6.36	(blank)	7.28	31/12/2011	1.17	-3.02	20.31	-2.58	M-HR	Mixed Asset SGD Balanced
NTUC Global Managed Fund (Conservative)	0.26	6.22	(blank)	4.20	31/12/2011	1.05	1.05	19.85	7.77	M-HR	Mixed Asset SGD Conservative
NTUC Global Bond Fund	0.48	6.42	(blank)	2.86	31/12/2011	0.94	5.36	20.52	22.03	L-MR	Bond Global
NTUC Global Managed Fund (Growth)	0.09	6.90	(blank)	9.99	31/12/2011	1.25	-6.12	22.17	-12.42	M-HR	Mixed Asset SGD Aggressive
AIA Greater China Balanced Fund	-0.05	6.32	(blank)	10.17	31/12/2011	0.62	-13.93	20.18	-11.99	M-HR	Mixed Asset SGD Balanced
Manulife Lifestyle Portfolios - Growth	-0.03	6.10	(blank)	11.82	31/12/2011	1.66	-13.27	19.44	-13.41	HR	Mixed Asset SGD Aggressive
Manulife Lifestyle Portfolios - Moderate	-0.03	5.68	(blank)	8.51	31/12/2011	1.42	-8.41	18.03	-4.04	M-HR	Mixed Asset SGD Balanced
Manulife Lifestyle Portfolios - Secure	-0.02	2.18	(blank)	4.75	31/12/2011	1.37	-0.34	6.70	-4.32	M-HR	Mixed Asset SGD Balanced
Manulife Lifestyle Portfolios - Conservative	-0.04	1.61	(blank)	2.94	31/12/2011	1.22	2.90	4.92	3.53	M-HR	Mixed Asset SGD Conservative
Manulife Singapore Bond Fund	0.18	3.51	0.35	2.50	31/12/2011	0.93	5.57	10.90	21.50	L-MR	Bond SGD
Manulife Singapore Cash Fund	-8.13	0.18	0.07	0.08	31/12/2011	0.63	-0.16	0.53	4.73	LR	Money Market SGD
Aviva Legg Mason Western Asset Global Bond Trust (SP)	-0.19	-1.94	-1.81	5.06	31/3/2012	2.21	5.97	-5.71	-0.95	L-MR	Bond Global
Aviva Nikko AM Shenton Short Term Bond (SP)	-0.36	1.46	0.98	0.74	31/3/2012	2.07	-0.09	4.45	0.19	L-MR	Money Market SGD
TMLS Global Balanced Fund	0.05	6.52	-1.51	7.17	31/12/2011	1.40	-7.80	20.88	-4.28	M-HR	Mixed Asset SGD Balanced
AIA Japan Balanced Fund	0.02	2.35	(blank)	5.63	31/12/2011	1.44	-1.35	7.21	-21.53	M-HR	Mixed Asset SGD Balanced
AIA Emerging Markets Balanced Fund	-0.02	6.80	(blank)	10.20	31/12/2011	1.46	-13.64	21.83	-11.67	M-HR	Mixed Asset SGD Balanced
GreatLink Lion Japan Growth Fund	-0.06	4.32	5.64	11.79	30/9/2011	1.61	-9.33	13.52	(blank)	HR	Equity Japan
GreatLink Lion Asian Balanced Fund	-0.02	4.90	(blank)	8.57	30/9/2011	1.33	-9.92	15.43	(blank)	M-HR	Mixed Asset SGD Balanced
HSBC-Link Global Bond Fund	-0.12	-0.62	(blank)	5.10	31/12/2011	0.98	7.36	-1.85	(blank)	L-MR	Bond Global

Singapore ILPs	Sharpe Ratio ¹ (3Year)	Annualised Monthly Return SGD % (3Year)	Annualised Excess Return ² SGD % (3Year)	Annualised Monthly Risk SGD % (3Year)	Expense Ratio		06/30/2011 06/30/2012 1-Year Fund Performance	06/30/2009 06/30/2012 3-Year Fund Performance	06/30/2007 06/30/2012 5-Year Fund Performance	CPFIS Risk Classification ³	Lipper Global Classification
					Date	Value					
Quadrant D											
UOB LifeLink Global Fund	0.00	3.39	-6.39	12.98	31/12/2011	1.34	-9.96	10.53	-30.88	HR	Equity Global
NTUC Global Equity Fund	0.04	5.64	-1.91	14.12	31/12/2011	1.53	-7.86	17.89	-34.20	HR	Equity Global
John Hancock Worldwide Equities Fund	-0.02	2.64	-6.53	12.92	31/12/2011	1.95	-10.63	8.14	-33.14	HR	Equity Global
John Hancock Greater China Fund	-0.12	6.24	-1.88	18.27	31/12/2011	1.95	-21.16	19.91	3.47	HR	Equity Greater China
John Hancock Japan Growth Fund	-0.14	-3.29	0.18	13.79	31/12/2011	1.88	-15.67	-9.55	-47.61	HR	Equity Japan
PruLink Pan European Fund	-0.08	2.04	-2.79	18.28	31/12/2011	1.77	-14.33	6.25	-40.41	HR	Equity Europe
Manulife Golden Regional China Fund	-0.12	6.24	-1.88	18.26	31/12/2011	1.95	-21.17	19.92	3.98	HR	Equity China
Manulife Golden Worldwide Equity Fund	-0.02	2.79	-6.35	12.90	31/12/2011	1.86	-10.48	8.60	-32.38	HR	Equity Global
John Hancock European Equity Fund	-0.07	2.69	0.06	20.41	31/12/2011	2.36	-21.77	8.30	-46.36	HR	Equity Europe
AIA International Health Care Fund	0.04	1.80	-2.46	12.32	31/12/2011	2.32	1.32	5.49	-24.61	HR	Equity Sector Pharma&Health
UOB Life FOF Asia Top 50 Fund	-0.13	0.84	(blank)	13.49	31/12/2011	2.09	-22.44	2.54	-41.89	HR	Equity Asia Pacific
UOB Life FOF Greater China Fund	-0.08	5.08	(blank)	20.10	31/12/2011	1.87	-27.77	16.03	-25.61	HR	Equity Greater China
UOB Life FOF International Growth Fund	0.00	3.35	(blank)	12.90	31/12/2011	1.34	-10.00	10.40	-30.72	HR	Equity Global
GreatLink Enhancer Fund	-0.04	6.80	-12.77	17.57	30/9/2011	1.55	-21.43	21.81	-12.02	HR	Equity Asia Pacific Ex Japan
GreatLink Pan Asia Fund	-0.06	5.67	1.18	12.86	30/9/2011	1.55	-19.32	17.98	-34.78	HR	Equity Asia Pacific
GreatLink European Equity Fund	-0.03	1.57	-2.80	18.53	30/9/2011	1.61	-13.81	4.77	-44.53	HR	Equity Europe
GreatLink Global Equity Fund	0.05	5.86	-1.65	14.51	30/9/2011	1.67	-5.61	18.64	-32.65	HR	Equity Global
GreatLink Global Growth Trends Portfolio	-0.01	3.65	-4.23	14.74	30/9/2011	1.66	-11.19	11.34	-45.86	HR	Equity Global
AIA Portfolio 100	0.03	5.46	-3.16	12.32	31/12/2011	1.95	-5.57	17.29	-30.54	HR	Equity Global
GreatLink Global Opportunities Fund	0.07	7.30	0.01	12.87	30/9/2011	1.85	-1.12	23.53	-29.75	HR	Equity Global
GreatLink Global Equity Alpha Fund	-0.03	0.16	-9.19	14.28	30/9/2011	1.89	-13.84	0.49	-45.87	HR	Equity Global
GreatLink LifeStyle Dynamic Portfolio	0.01	6.29	(blank)	14.06	30/9/2011	1.71	-11.40	20.08	-28.94	HR	Equity Global
John Hancock Pacific Equity Fund	-0.09	7.15	-12.54	19.62	31/12/2011	1.63	-31.86	23.01	-27.98	HR	Equity Asia Pacific Ex Japan
AXA Global High Growth Fund	0.04	5.26	-2.35	14.08	31/12/2011	1.94	-7.87	16.63	-39.18	HR	Equity Global
Aviva EU Convergence Growth (SP)	-0.05	-1.10	(blank)	29.26	31/3/2012	2.95	-28.36	-3.27	-50.67	HR	Equity Emerging Mkts Europe
Aviva Templeton Global Balanced (SP)	-0.04	2.44	(blank)	12.32	31/3/2012	2.35	-5.50	7.49	-26.22	M-HR	Mixed Asset SGD Balanced
AIA Greater China Equity Fund	-0.09	6.65	-5.96	15.83	31/12/2011	0.67	-22.80	21.31	-24.13	HR	Equity Greater China
HSBC-Link China Equity Fund	-0.18	3.37	-5.28	14.92	31/12/2011	1.95	-22.42	10.44	-27.40	HR	Equity China
Manulife Japan Growth Fund	-0.15	-3.94	-0.42	14.11	31/12/2011	1.73	-16.71	-11.35	-49.82	HR	Equity Japan
Aviva Henderson European (SP)	-0.10	-1.21	-3.08	18.65	31/3/2012	2.83	-10.98	-3.58	-49.40	HR	Equity Europe ex UK
Aviva LionGlobal India (SP)	-0.12	6.33	-6.59	21.77	31/3/2012	2.87	-36.15	20.23	-20.77	HR	Equity India
Aviva LionGlobal Japan Growth (SP)	-0.07	3.88	6.91	12.80	31/3/2012	2.97	-11.76	12.11	-41.31	HR	Equity Japan
AXA Global Equity Blend	-0.05	1.43	-7.66	15.85	31/12/2011	1.95	-13.46	4.34	-51.43	HR	Equity Global
AXA China Growth Fund	-0.10	5.42	-8.09	16.47	31/12/2011	1.90	-22.20	17.15	(blank)	HR	Equity China
AIA Japan Equity Fund	-0.15	-8.08	-5.99	13.66	31/12/2011	1.18	-14.29	-22.34	-58.01	HR	Equity Japan
Aviva AllianceBernstein Global Growth Trends (SP)	-0.06	2.15	-6.79	15.02	31/3/2012	3.41	-12.50	6.58	-50.14	HR	Equity Global
AXA India Fund	-0.08	7.56	-5.01	23.18	31/12/2011	1.93	-36.30	24.43	(blank)	HR	Equity India
GreatLink China Growth Fund	-0.09	6.86	-5.70	15.95	30/9/2011	1.55	-20.96	22.01	(blank)	HR	Equity Greater China
PruLink Global Leaders Fund	0.00	7.55	-1.04	14.39	31/12/2011	1.93	-12.11	24.40	(blank)	HR	Equity Global
HSBC-Link Global Equity Fund	-0.06	2.29	(blank)	15.87	31/12/2011	1.70	-14.33	7.04	(blank)	HR	Equity Global

Note 1: Sharpe Ratio is a measurement of a fund's annualized return that is in excess of the risk-free rate (a theoretical interest rate that would be returned on an investment that is completely free of risk) and adjusted for the fund's volatility. The calculation is as follows: (Fund Return – Risk-Free Return)/Fund Standard Deviation. From this formula, it can be derived that the higher a fund's Sharpe ratio, the better its returns relative to the amount of investment risk it has taken.

Note 2: Annualized Excess Return is a fund's excess return relative to its benchmark, on an annualised basis. Benchmarks may either be supplied to Lipper by the fund's managers, or be assigned on a case-by-case basis in accordance with the fund's stated mandate and Lipper Global Classifications and Methodology.

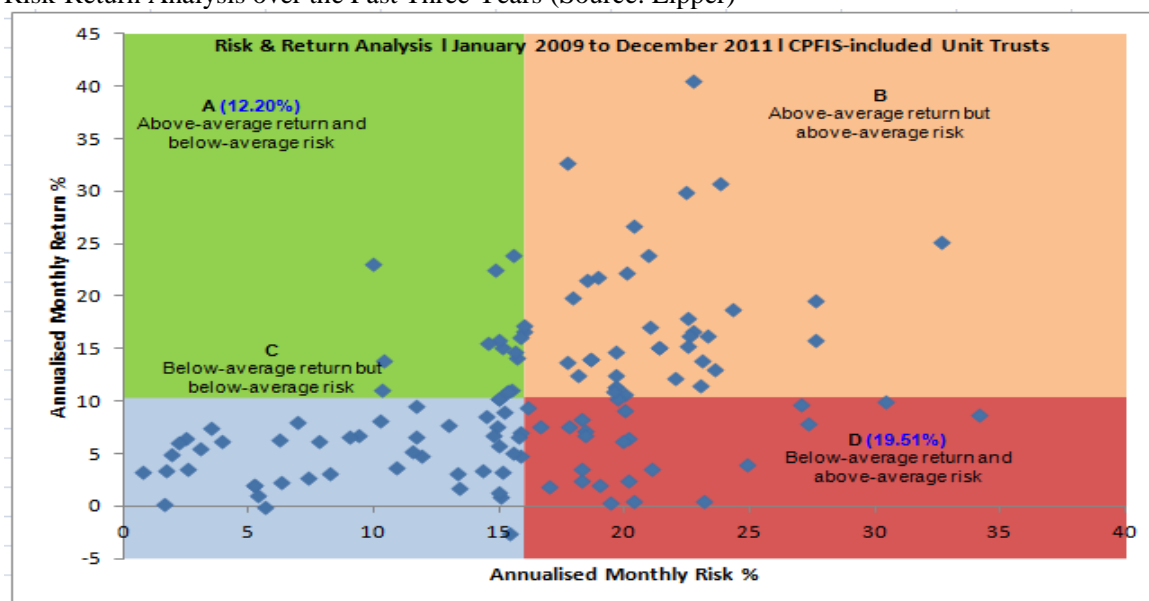
Note 3: HR=Higher Risk, M-HR=Medium to High Risk, L-MR=Low to Medium Risk, LR=Lower Risk

6. ANNEX B: H2 2011 DATA

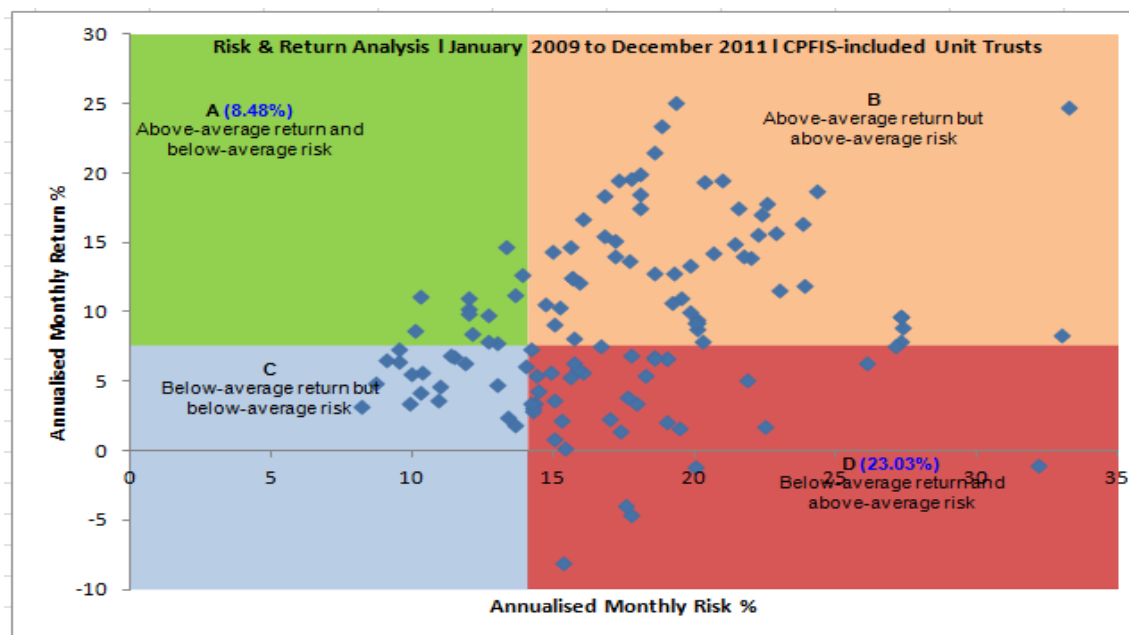
SCATTER PLOT FOR CPFIS

SUMMARY OF RISK-ADJUSTED PERFORMANCE

Risk-Return Analysis over the Past Three Years (Source: Lipper)



Over the three-year period from 1 January 2009 to 30 December 2011, 12.20% of all CPFIS-included unit trusts fell into quadrant A, while 19.51% of the funds were in quadrant D.



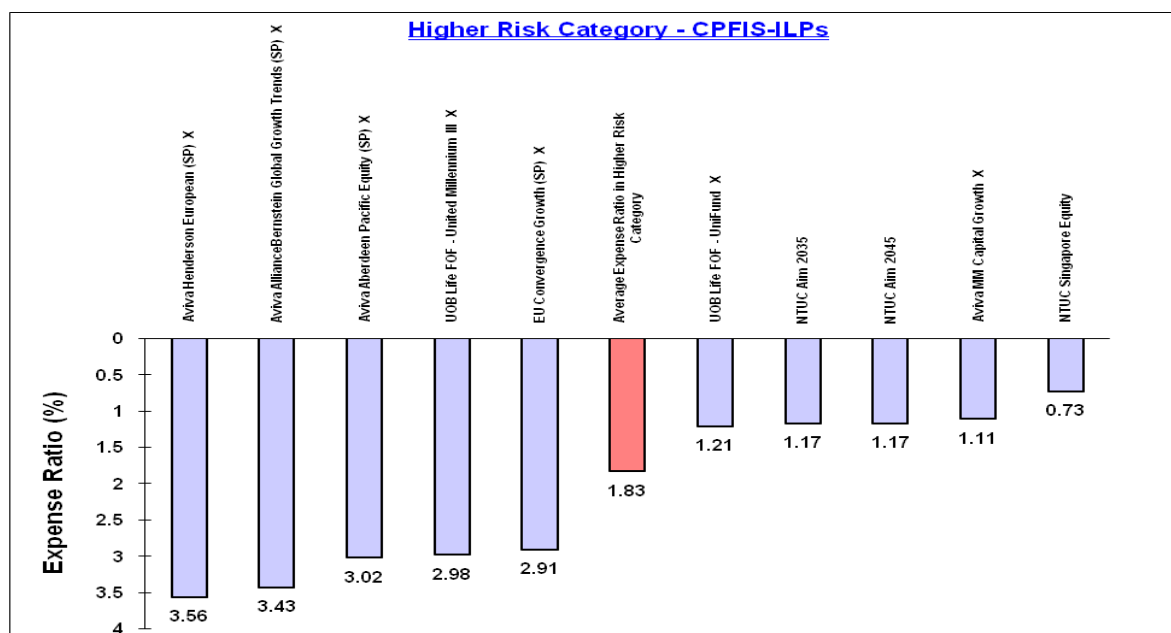
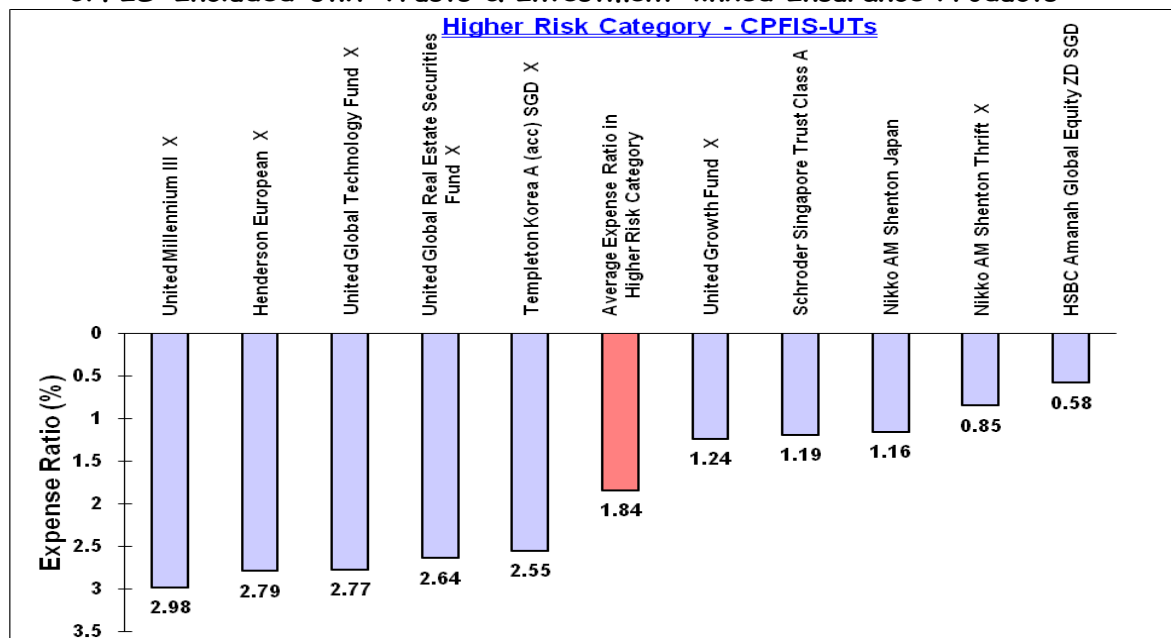
Over the three-year period from 1 January 2009 to 30 December 2011, 8.48% of the ILPs were in quadrant A, while 23.03% of the CPFIS-included ILPs were in quadrant D.

* For the complete list of funds in each quadrant, please see pg 25-30.

EXPENSE RATIO GRAPHS – FUNDS WITH THE 5 HIGHEST AND 5 LOWEST EXPENSE RATIO IN EACH RISK CATEGORY

A) Higher Risk Category

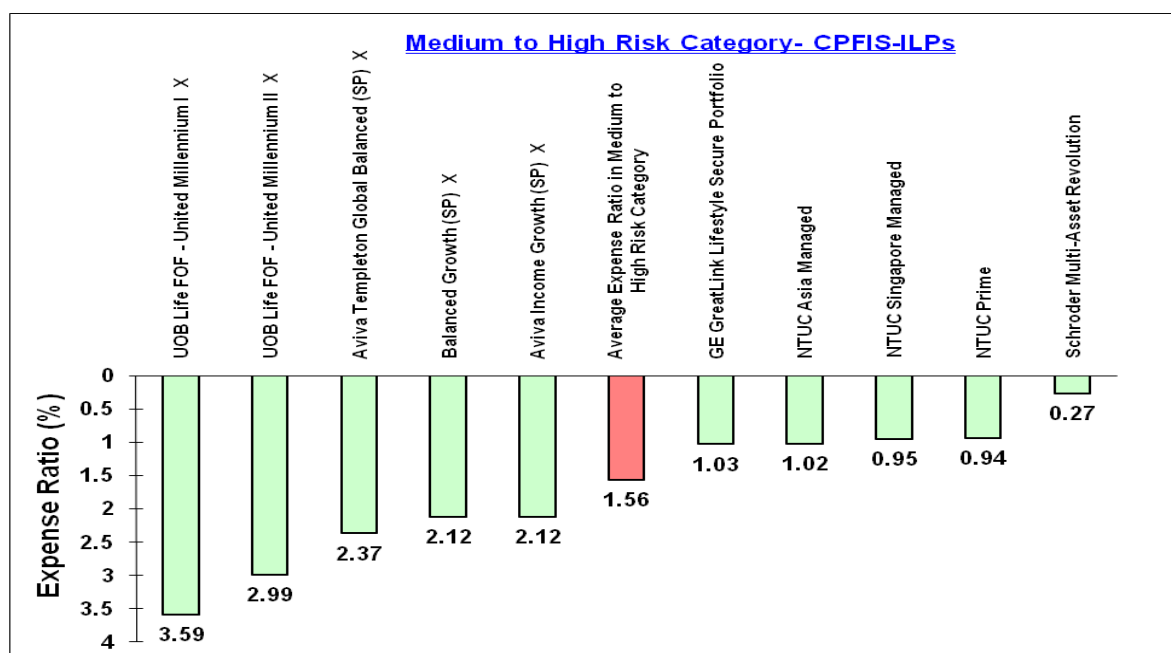
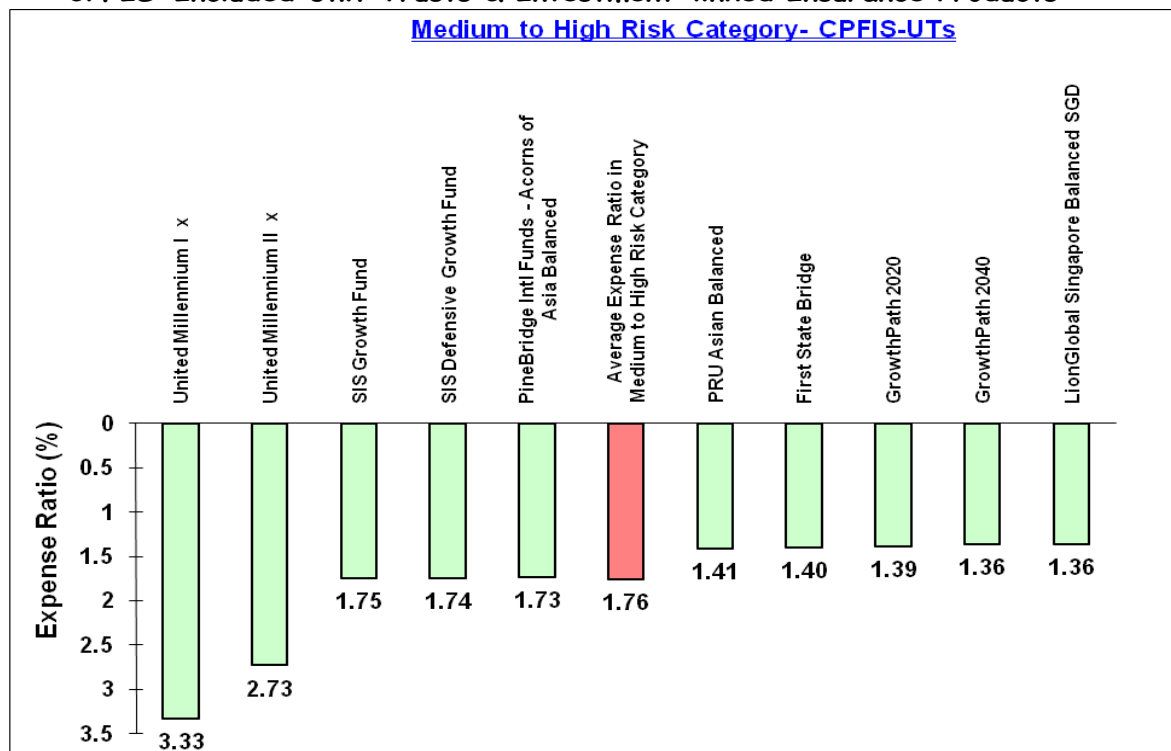
CPFIS-Included Unit Trusts & Investment-linked Insurance Products



* The expense ratios of Aviva's ILPs include all expenses and costs necessary to issue and maintain the ILPs. Unlike other ILPs, Aviva's ILPs do not charge an upfront sales charge, mortality fee, policy fee, bid-offer spread and switching fee separately from their management fee.

B) Medium to High Risk Category

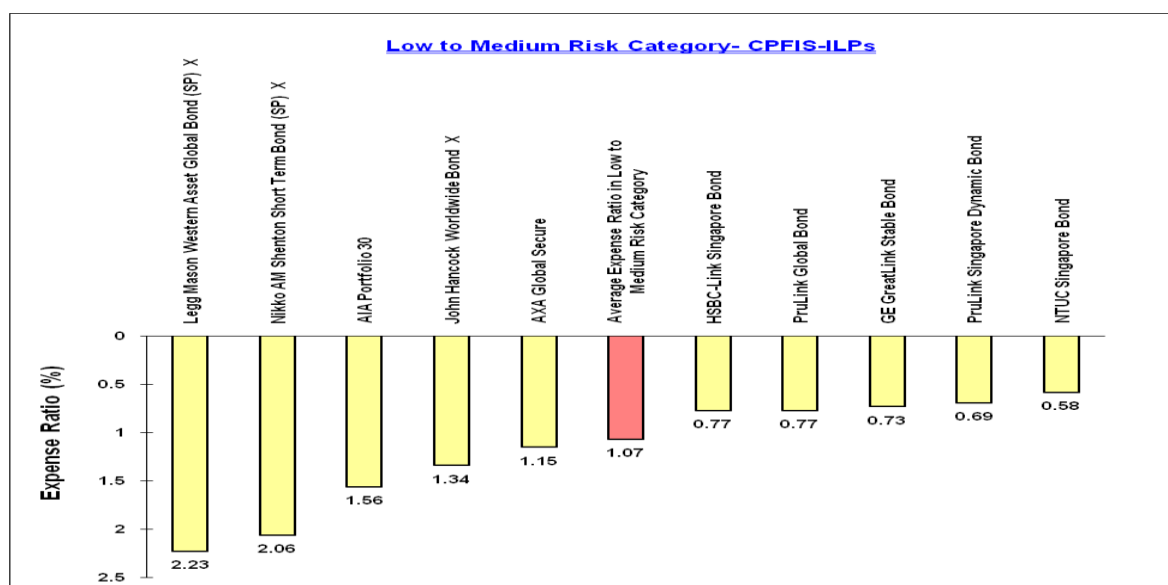
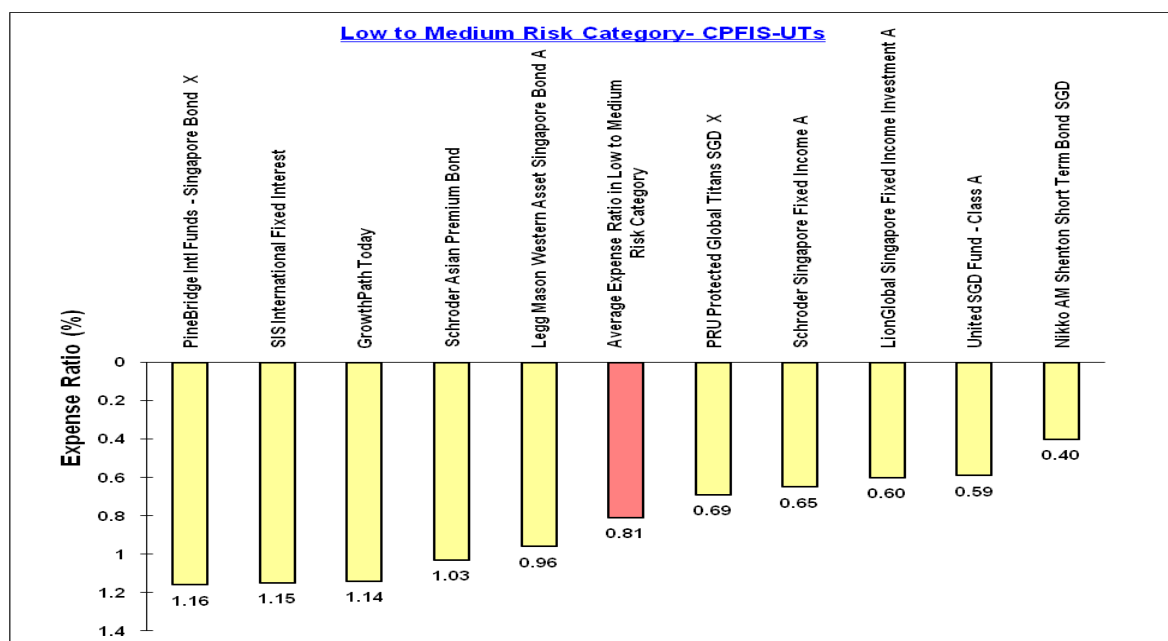
CPFIS-Included Unit Trusts & Investment-linked Insurance Products



* The expense ratios of Aviva's ILPs include all expenses and costs necessary to issue and maintain the ILPs. Unlike other ILPs, Aviva's ILPs do not charge an upfront sales charge, mortality fee, policy fee, bid-offer spread and switching fee separately from their management fee.

C) Low to Medium Risk Category

CPFIS-Included Unit Trusts & Investment-linked Insurance Products



* The expense ratios of Aviva's ILPs include all expenses and costs necessary to issue and maintain the ILPs. Unlike other ILPs, Aviva's ILPs do not charge an upfront sales charge, mortality fee, policy fee, bid-offer spread and switching fee separately from their management fee.

1. Closed-end funds are excluded from the computation as their management fees are generally charged upfront.
2. Fixed term funds are excluded from the expense ratio rankings
3. All the expense ratios are in percentages (%).

SUPPORTING TABLES H2 2011

CPFIS-Included Unit Trusts

Singapore Unit Trust	Sharpe Ratio ¹ (3Year)	Annualised Monthly Return SGD % (3Year)	Annualised Excess Return ² SGD % (3Year)	Annualised Monthly Risk SGD % (3Year)	Expense Ratio		12/31/2010 12/31/2011 1-Year Fund Performance	12/31/2008 12/31/2011 3-Year Fund Performance	12/31/2006 12/31/2011 5-Year Fund Performance	CPFIS Risk Classification ³	Lipper Global Classification
					Date	Value					
Quadrant A											
Aberdeen Malaysian Equity Fund	0.53	23.02	4.67	9.99	31/3/2011	1.70	9.91	86.16	73.15	HR	Equity Malaysia
First State Asian Growth Fund	0.23	15.75	0.22	15.00	30/9/2011	1.71	-8.73	55.09	20.23	HR	Equity Asia Pacific Ex Japan
First State Regional China Fund	0.24	17.24	6.75	16.00	30/9/2011	1.65	-9.95	61.15	23.00	HR	Equity Greater China
Henderson Global Technology Fund	0.23	16.14	1.00	15.87	30/6/2011	1.95	-2.08	56.67	3.68	HR	Equity Sector Information Tech
LionGlobal Malaysia Fund	0.35	22.56	-1.23	14.85	30/6/2011	1.45	-1.45	84.08	42.64	HR	Equity Malaysia
Schroder Global Smaller Companies Fund	0.15	11.04	-1.98	15.49	30/6/2011	2.11	-9.39	36.93	-20.37	HR	Equity Global Sm&Mid Cap
Fidelity Funds - America A-USD	0.15	10.91	(blank)	15.32	30/4/2011	1.90	-2.57	36.43	-19.05	HR	Equity North America
PineBridge International Funds - Acorns of Asia											
Balanced Fund	0.21	14.69	(blank)	15.63	30/6/2011	1.73	-11.47	50.85	0.47	M-HR	Mixed Asset SGD Balanced
Prudential U.T. - Asian Balanced Fund	0.23	11.13	-1.31	10.32	30/6/2011	1.41	-6.89	37.23	2.68	M-HR	Mixed Asset SGD Balanced
First State Bridge	0.29	13.79	1.57	10.36	30/9/2011	1.40	-3.60	47.35	16.33	M-HR	Mixed Asset SGD Balanced
First State Dividend Advantage	0.24	15.52	-0.82	14.54	30/9/2011	1.68	-9.15	54.17	20.16	HR	Equity Asia Pacific Ex Japan
Schroder Asian Equity Yield Fund	0.22	15.15	(blank)	15.14	30/6/2011	2.08	-8.39	52.68	-2.10	HR	Equity Asia Pacific Ex Japan
Aberdeen Asian Smaller Companies Fund	0.36	23.94	3.37	15.58	31/3/2011	1.83	-10.09	90.40	33.97	HR	Equity Asia Pacific Sm&Mid Cap
Fidelity Funds-America Fund	0.15	10.89	(blank)	15.34	30/4/2011	1.90	-2.93	36.35	-19.28	HR	Equity North America
FTIF - Franklin U.S. Opportunities Fund	0.20	14.20	0.23	15.68	30/6/2011	1.84	-2.82	48.92	(blank)	HR	Equity North America
Quadrant B											
Aberdeen Indonesia Equity Fund	0.42	40.46	-10.35	22.74	31/3/2011	1.71	-1.07	177.11	83.86	HR	Equity Indonesia
Aberdeen Pacific Equity Fund	0.26	19.84	4.92	17.94	31/3/2011	1.72	-11.95	72.11	12.71	HR	Equity Asia Pacific Ex Japan
Aberdeen Singapore Equity Fund	0.19	17.11	3.35	21.05	31/3/2011	1.67	-15.83	60.60	11.76	HR	Equity Singapore
Aberdeen Thailand Equity Fund	0.42	32.63	2.35	17.71	31/3/2011	1.69	4.42	133.29	51.59	HR	Equity Thailand
Nikko AM Shenton Thrift Fund	0.16	16.22	2.20	23.27	30/6/2011	0.85	-19.77	56.98	-14.52	HR	Equity Singapore
Legg Mason Western Asset SE Asia Special Situations Trust	0.19	25.09	(blank)	32.63	31/3/2011	1.66	-21.54	95.72	8.01	HR	Equity Asia Pacific Ex Japan
LionGlobal Singapore/Malaysia Fund	0.27	21.82	1.79	18.93	30/6/2011	1.30	-10.97	80.77	10.22	HR	Equity Malaysia/Singapore
LionGlobal Singapore Trust Fund	0.13	13.84	-3.22	23.12	30/6/2011	1.36	-22.76	47.52	-11.88	HR	Equity Singapore
LionGlobal Thailand Fund	0.30	30.69	-6.21	23.84	30/6/2011	1.48	-5.73	123.21	50.06	HR	Equity Thailand
Schroder Asian Growth Fund	0.26	22.26	8.19	20.08	30/6/2011	1.25	-10.88	82.75	6.59	HR	Equity Asia Pacific Ex Japan
Schroder Emerging Markets Fund	0.14	12.40	-1.16	19.62	30/6/2011	2.10	-16.82	42.00	-10.77	HR	Equity Emerging Mkts Global
Schroder Singapore Trust	0.15	15.30	3.95	22.53	30/6/2011	1.19	-16.31	53.28	1.42	HR	Equity Singapore
UOB United Growth Fund	0.17	16.59	-2.39	22.77	30/6/2011	1.24	-17.08	58.50	-8.75	HR	Equity Singapore
Fidelity Funds - South East Asia A-USD	0.16	13.99	-2.25	18.66	30/4/2011	1.96	-15.75	48.12	2.72	HR	Equity Asia Pacific Ex Japan
Fidelity Funds - South East Asia A-USD	0.12	11.40	0.03	19.62	30/4/2011	1.97	-18.92	38.25	4.82	HR	Equity Greater China
Fidelity Funds - South East Asia A-USD	0.16	15.10	-0.75	21.37	30/4/2011	1.95	-17.14	52.49	8.44	HR	Equity Asia Pacific Ex Japan
Prudential U.T. - Global Technology Fund	0.23	16.68	1.40	16.02	30/6/2011	1.73	-1.95	58.86	-13.00	HR	Equity Sector Information Tech
APS Alpha Fund	0.26	23.86	(blank)	20.91	31/3/2011	2.25	-14.93	90.00	-4.20	HR	Equity Asia Pacific Ex Japan
Amundi Opportunities-Amundi Singapore Dividend Growth	0.16	16.26	0.03	22.60	31/5/2011	1.49	-16.59	57.13	1.12	HR	Equity Singapore
Aberdeen India Opportunities Fund	0.18	17.90	7.77	22.82	31/3/2011	1.90	-25.31	63.89	5.24	HR	Equity India
Prudential U.T. - Dragon Peacock Fund	0.11	11.55	1.43	23.01	30/6/2011	1.63	-27.93	38.79	-5.03	HR	Equity Emerging Mkts Asia
Nikko AM Shenton Global Property Securities Fund	0.12	12.14	(blank)	22.02	30/6/2011	1.71	-2.22	41.02	-38.91	HR	Equity Sector Real Est Global
Henderson Global Property Equities Fund	0.12	10.96	-1.52	19.54	30/6/2011	1.95	-9.18	36.62	-38.41	HR	Equity Sector Real Est Global
Aberdeen Global Emerging Markets Fund	0.27	21.53	6.96	18.49	31/3/2011	1.79	-10.94	79.51	24.64	HR	Equity Emerging Mkts Global
First State Global Resources Fund	0.17	18.77	0.50	24.28	30/9/2011	1.56	-25.52	67.53	4.06	HR	Equity Sector Natural Resource
Prudential U.T. - Global Basics Fund	0.17	13.65	(blank)	17.71	30/6/2011	1.75	-12.09	46.79	-10.88	HR	Equity Global
Schroder Emerging Europe Fund	0.13	15.85	(blank)	27.61	30/6/2011	2.16	-21.74	55.49	-34.66	HR	Equity Emerging Mkts Europe
Schroder BRIC Fund	0.11	10.66	-4.30	20.01	30/6/2011	2.05	-21.49	35.50	-17.17	HR	Equity Emerging Mkts Global
SIS International Property Securities Fund	0.12	13.00	-2.10	23.62	31/3/2011	1.95	0.16	44.31	-45.94	HR	Equity Sector Real Est Global
Legg Mason Western Asset Singapore Opportunities Trust	0.17	19.64	4.55	27.65	31/3/2011	1.74	-21.74	71.25	(blank)	HR	Equity Singapore
Fidelity Funds-Southeast Asia Fund	0.16	15.11	-0.73	21.35	30/4/2011	1.95	-17.39	52.54	8.39	HR	Equity Asia Pacific Ex Japan
FTIF - Templeton Emerging Markets Fund	0.17	14.76	-2.05	19.63	30/6/2011	2.51	-14.90	51.12	(blank)	HR	Equity Emerging Mkts Global
FTIF - Templeton Asian Growth Fund	0.30	26.73	14.25	20.38	30/6/2011	2.22	-13.94	103.54	(blank)	HR	Equity Asia Pacific Ex Japan
FTIF - Templeton China Fund	0.15	12.40	0.83	18.12	30/6/2011	2.46	-17.41	42.00	(blank)	HR	Equity Greater China
FTIF - Templeton Thailand Fund	0.30	29.95	8.72	22.42	30/6/2011	2.50	-4.62	119.43	(blank)	HR	Equity Thailand
Fidelity Funds-Asian Special Situations Fund	0.17	14.01	-2.22	18.63	30/4/2011	1.95	-15.98	48.21	(blank)	HR	Equity Asia Pacific Ex Japan
Fidelity Funds-Greater China Fund	0.12	11.29	-0.11	19.68	30/4/2011	1.95	-19.45	37.83	(blank)	HR	Equity Greater China

Singapore Unit Trust	Sharpe Ratio ¹ (3Year)	Annualised Monthly Return SGD % (3Year)	Annualised Excess Return ² SGD % (3Year)	Annualised Monthly Risk SGD % (3Year)	Expense Ratio		12/31/2010 12/31/2011 1-Year Fund Performance	12/31/2008 12/31/2011 3-Year Fund Performance	12/31/2006 12/31/2011 5-Year Fund Performance	CPFIS Risk Classification ³	Lipper Global Classification
					Date	Value					
Quadrant C											
Legg Mason Western Asset Singapore Bond Fund	0.10	3.50	(blank)	2.59	31/3/2011	0.96	5.57	10.86	20.88	L-MR	Bond SGD
Nikko AM Shenton Eight Portfolios-Eight Portfolio D	0.09	6.60	(blank)	11.71	30/6/2011	2.05	-5.96	21.13	-21.41	HR	Mixed Asset SGD Aggressive
Nikko AM Shenton Eight Portfolios-Eight Portfolio E	0.09	7.54	(blank)	14.91	30/6/2011	2.07	-8.26	24.38	-28.71	HR	Equity Global
Nikko AM Shenton Japan Fund	-0.09	-2.65	-1.14	15.44	30/6/2011	1.16	-15.03	-7.75	-42.99	HR	Equity Japan
DWS Lion Bond Fund	0.13	3.33	(blank)	1.69	30/6/2011	0.72	1.86	10.34	15.26	L-MR	Bond Global
DWS Premier Select Trust	0.12	6.73	-1.27	9.39	30/6/2011	1.63	-7.83	21.58	-6.07	M-HR	Mixed Asset SGD Balanced
Legg Mason Western Asset Global Bond Trust	-0.13	-0.17	(blank)	5.65	31/3/2011	0.82	7.25	-0.50	6.68	L-MR	Bond Global
Nikko AM Shenton Horizon Investment Funds-Horizon Global Equity Fund	0.08	6.98	(blank)	15.87	30/6/2011	1.86	-7.33	22.42	-30.87	HR	Equity Global
Nikko AM Shenton Horizon Investment Funds-Horizon US Equity Fund	0.11	8.55	(blank)	14.47	30/6/2011	2.10	-1.90	27.89	-23.01	HR	Equity North America
LionGlobal Japan Growth Fund	0.06	5.71	8.64	15.02	30/6/2011	1.71	-9.28	18.13	-36.72	HR	Equity Japan
LionGlobal Singapore Balanced Fund	0.16	9.48	(blank)	11.69	30/6/2011	1.36	-11.42	31.23	2.66	M-HR	Mixed Asset SGD Balanced
United SGD Fund	0.43	6.06	5.78	2.24	30/6/2011	0.59	0.95	19.29	22.46	L-MR	Bond SGD
LionGlobal Japan Fund	-0.02	1.24	2.64	14.97	30/6/2011	1.53	-14.23	3.76	-44.47	HR	Equity Japan
UOB United Asia Top-50 Fund	-0.03	0.84	-4.87	15.06	30/6/2011	2.02	-22.44	2.54	-41.89	HR	Equity Asia Pacific
UOB United International Growth Fund	0.02	3.35	-5.68	14.34	30/6/2011	1.33	-10.00	10.40	-30.72	HR	Equity Global
UOB United Millennium Trust I	0.01	2.67	-2.12	7.35	30/6/2011	3.59	2.12	8.22	-8.08	M-HR	Mixed Asset SGD Balanced
UOB United Millennium Trust II	0.02	3.14	-3.14	8.21	30/6/2011	2.99	-3.76	9.71	-9.15	M-HR	Mixed Asset SGD Balanced
UOB United Millennium Trust III	0.03	3.60	-4.05	10.89	30/6/2011	2.98	-3.15	11.20	-23.99	HR	Mixed Asset SGD Aggressive
SIS High Growth Fund	0.04	5.04	(blank)	15.56	31/3/2011	1.94	-8.94	15.88	-40.21	HR	Equity Global
SIS International Fixed Interest Fund	-0.08	1.06	-2.09	5.38	31/3/2011	1.15	3.53	3.21	6.53	L-MR	Bond Global
SIS International Equity Fund	0.04	4.75	-2.94	15.88	31/3/2011	1.95	-9.49	14.95	-40.32	HR	Equity Global
Schroder Multi-Asset Revolution	0.22	7.99	2.72	6.92	30/6/2011	1.48	-3.06	25.92	0.94	M-HR	Mixed Asset SGD Balanced
Nikko AM Shenton Short Term Bond Fund	0.25	3.23	2.77	0.77	30/6/2011	0.40	1.53	10.01	9.32	L-MR	Bond SGD
UOB United Global Healthcare Fund	0.11	7.72	1.49	13.00	30/6/2011	2.29	6.22	24.98	-3.21	HR	Equity Sector Pharma&Health
LionGlobal Singapore Fixed Income Investment	0.33	4.85	(blank)	1.94	30/6/2011	0.60	5.26	15.26	21.37	L-MR	Bond SGD
Prudential U.T. – Protected Global Titans Fund (SS)	-0.39	0.23	-2.86	1.66	30/6/2011	0.69	0.17	0.70	6.26	L-MR	Protected
PineBridge International Funds – Singapore Bond Fund	0.38	7.39	(blank)	3.51	30/6/2011	1.16	4.26	23.84	15.80	L-MR	Bond SGD
SIS Defensive Growth Fund	-0.01	2.20	(blank)	6.29	31/3/2011	1.74	-1.12	6.76	-17.43	M-HR	Mixed Asset USD Conservative
SIS Growth Fund	0.05	4.75	(blank)	11.92	31/3/2011	1.75	-5.46	14.94	-30.94	M-HR	Mixed Asset USD Bal - Global
UOB GrowthPath Today	0.26	6.20	0.98	3.96	30/6/2011	1.14	2.62	19.78	12.28	L-MR	Target Maturity Other
UOB GrowthPath 2020	0.17	6.38	-0.11	6.24	30/6/2011	1.39	-0.28	20.38	0.34	M-HR	Target Maturity Other
UOB GrowthPath 2030	0.13	6.16	-0.93	7.78	30/6/2011	1.50	-3.07	19.63	-5.32	M-HR	Target Maturity Other
UOB GrowthPath 2040	0.12	6.58	-0.92	9.04	30/6/2011	1.36	-3.91	21.06	-10.16	M-HR	Target Maturity Other
UOB United Singapore Bond Fund	0.43	6.46	3.49	2.49	30/6/2011	0.78	7.32	20.67	23.15	L-MR	Bond SGD
AllianceBernstein - Global Conservative Portfolio	-0.03	2.01	0.16	5.25	31/8/2011	1.62	-2.83	6.15	-17.48	M-HR	Mixed Asset USD Conservative
Fidelity Funds - South East Asia A-USD	-0.03	2.02	0.18	5.26	31/8/2011	1.62	-2.79	6.20	-17.42	M-HR	Mixed Asset USD Conservative
Allianz Global Investors Premier Funds – RCM Global High Payout Fund	0.06	5.22	(blank)	11.51	30/6/2011	1.81	-3.44	16.50	-25.52	HR	Equity Global
Schroder Asian Premium Bond Fund	0.26	5.45	(blank)	3.06	30/6/2011	1.03	2.45	17.25	(blank)	L-MR	Bond Asia Pacific
Prudential U.T. – Asian Infrastructure Equity Fund	0.08	6.70	(blank)	14.78	30/6/2011	1.88	-16.13	21.46	(blank)	HR	Equity Asia Pacific Ex Japan
AllianceBernstein - Global Growth Trends Portfolio	0.01	3.24	-4.71	15.11	31/8/2011	2.07	-11.38	10.04	-46.24	HR	Equity Global
Prudential U.T. - Global Balanced Fund	0.15	8.18	(blank)	10.27	30/6/2011	1.63	-4.60	26.60	(blank)	M-HR	Mixed Asset SGD Balanced
DWS Global Themes Equity Fund	0.07	6.65	-0.74	15.79	30/6/2011	1.65	-14.88	21.30	-39.08	HR	Equity Global
AllianceBernstein - International Health Care Portfolio	-0.02	1.70	-5.18	13.41	31/5/2011	2.26	0.99	5.18	(blank)	HR	Equity Sector Pharma&Health
FTIF - Templeton Global Balanced Fund	0.01	3.10	-3.32	13.32	30/6/2011	1.69	-4.68	9.61	(blank)	M-HR	Mixed Asset USD Bal - Global
FTIF – Franklin Biotechnology Discovery Fund	0.11	8.96	-1.50	15.17	30/6/2011	1.97	10.68	29.38	(blank)	HR	Equity Sector Biotechnology
HSBC Amanah Global Equity	0.14	10.24	0.29	14.99	30/9/2011	0.58	-4.25	33.99	(blank)	HR	Equity Global
Fidelity Funds - South East Asia A-USD	0.14	10.25	0.29	15.01	30/9/2011	0.58	-4.25	33.99	(blank)	HR	Equity Global

Singapore Unit Trust	Sharpe Ratio ¹ (3Year)	Annualised Monthly Return SGD % (3Year)	Annualised Excess Return ² SGD % (3Year)	Annualised Monthly Risk SGD % (3Year)	Expense Ratio		12/31/2010 12/31/2011 1-Year Fund Performance	12/31/2008 12/31/2011 3-Year Fund Performance	12/31/2006 12/31/2011 5-Year Fund Performance	CPFIS Risk Classification ³	Lipper Global Classification
					Date	Value					
Quadrant D											
Legg Mason Western Asset Asian Enterprise Trust	0.07	9.62	-8.90	27.07	31/3/2011	1.66	-30.63	31.71	-27.15	HR	Equity Asia Pacific Ex Japan
Henderson European Fund	-0.03	0.52	-1.28	20.38	30/6/2011	1.79	-8.45	1.56	-45.38	HR	Equity Europe ex UK
Nikko AM Shenton Horizon Investment Funds-Horizon European Equity Fund	-0.03	0.39	(blank)	23.15	30/6/2011	2.09	-17.35	1.16	-43.67	HR	Equity Europe ex UK
LionGlobal China Growth Fund	0.06	6.69	-5.92	18.41	30/6/2011	1.40	-21.80	21.43	-11.94	HR	Equity Greater China
LionGlobal Asia Pacific Fund	0.07	7.11	-12.30	18.42	30/6/2011	1.65	-21.81	22.88	-17.06	HR	Equity Asia Pacific Ex Japan
LionGlobal India Fund	0.05	7.91	-4.55	27.36	30/6/2011	1.61	-36.08	25.67	-16.26	HR	Equity India
Schroder European Large Cap Equity Fund	0.01	3.56	-1.38	21.07	30/6/2011	2.05	-10.68	11.07	-35.03	HR	Equity Europe
UOB United Asia Fund - Class SGD	0.09	9.16	-8.99	20.04	30/6/2011	1.64	-28.04	30.09	-18.37	HR	Equity Asia Pacific Ex Japan
UOB United Global Capital Fund	0.02	3.95	3.77	24.90	30/6/2011	1.94	-9.05	12.32	-48.18	HR	Equity Sector Banks&Financial
UOB United Global Technology Fund	0.08	7.52	-8.51	17.81	30/6/2011	2.77	-15.36	24.31	-17.72	HR	Equity Sector Information Tech
Schroder Greater China Fund	0.11	10.26	1.99	19.71	30/6/2011	1.88	-20.57	34.03	-7.29	HR	Equity Greater China
Fidelity Funds-European Growth Fund	0.00	2.47	(blank)	20.16	30/4/2011	1.91	-16.60	7.59	-38.47	HR	Equity Europe
Aberdeen Global Opportunities Fund	0.11	9.34	1.68	16.13	31/3/2011	1.73	-1.27	30.71	-14.52	HR	Equity Global
Prudential U.T. – Pan European Fund	-0.01	2.05	-3.04	19.00	30/6/2011	1.73	-14.35	6.29	-40.35	HR	Equity Europe
HSBC Global Investment Funds-Indian Equity Fund	0.05	8.70	-1.19	34.15	31/3/2011	1.91	-45.09	28.45	-36.57	HR	Equity India
DWS China Equity Fund	0.05	6.44	-1.64	20.13	30/6/2011	1.82	-20.93	20.60	4.18	HR	Equity China
UOB United Global Real Estate Securities Fund	0.05	6.16	-6.69	19.93	30/6/2011	2.64	-7.85	19.64	-45.47	HR	Equity Sector Real Est Global
AllianceBernstein - Global Equity Blend Portfolio	-0.01	1.81	-6.39	17.02	31/8/2011	2.06	-13.95	5.52	-50.13	HR	Equity Global
Prudential U.T. - Global Leaders Fund	0.08	7.60	-1.32	16.66	30/6/2011	1.94	-12.14	24.59	(blank)	HR	Equity Global
Fidelity Funds-China Focus Fund	0.09	8.24	(blank)	18.31	30/4/2011	1.93	-19.43	26.82	(blank)	HR	Equity China
FTIF - Templeton Global Equity Income Fund	0.00	2.41	-7.60	18.25	30/6/2011	1.65	-9.39	7.39	(blank)	HR	Equity Global Income
FTIF - Templeton Global Fund	0.01	3.52	-6.24	18.28	30/6/2011	1.85	-10.35	10.92	(blank)	HR	Equity Global
FTIF – Templeton Korea Fund	0.07	9.97	-16.00	30.45	30/6/2011	2.55	-25.53	33.00	(blank)	HR	Equity Korea
FTIF – Templeton European Fund	-0.03	0.25	-5.04	19.46	30/6/2011	1.86	-9.62	0.77	(blank)	HR	Equity Europe

Note 1: Sharpe Ratio is a measurement of a fund's annualized return that is in excess of the risk-free rate (a theoretical interest rate that would be returned on an investment that is completely free of risk) and adjusted for the fund's volatility. The calculation is as follows: (Fund Return - Risk-Free Return)/Fund Standard Deviation. From this formula, it can be derived that the higher a fund's Sharpe ratio, the better its returns relative to the amount of investment risk it has taken.

Note 2: Annualized Excess Return is a fund's excess return relative to its benchmark, on an annualised basis. Benchmarks may either be supplied to Lipper by the fund's managers, or be assigned on a case-by-case basis in accordance with the fund's stated mandate and Lipper Global Classifications and Methodology.

Note 3: HR=Higher Risk, M-HR=Medium to High Risk, L-MR=Low to Medium Risk, LR=Lower Risk

CPFIS-Included ILPs

Singapore Unit Trust	Sharpe Ratio ¹ (3Year)	Annualised Monthly Return SGD % (3Year)	Annualised Excess Return ² SGD % (3Year)	Annualised Monthly Risk SGD % (3Year)	Expense Ratio		12/31/2010 12/31/2011 1-Year Fund Performance	12/31/2008 12/31/2011 3-Year Fund Performance	12/31/2006 12/31/2011 5-Year Fund Performance	CPFIS Risk Classification ³	Lipper Global Classification	
					Date	Value						
Quadrant A												
Aviva MM Balanced Growth Fund	0.19	10.98	(blank)	12.01	30/9/2011	1.12	-4.70	36.68	7.88	M-HR	Mixed Asset SGD Balanced	
NTUC Prime Fund	0.18	10.26	(blank)	12.01	30/6/2011	0.94	-9.62	34.05	14.65	M-HR	Mixed Asset SGD Balanced	
NTUC Singapore Managed Fund	0.17	11.18	(blank)	13.66	30/6/2011	0.95	-10.19	37.43	14.26	M-HR	Mixed Asset SGD Balanced	
NTUC Asia Managed Fund	0.24	14.72	(blank)	13.36	30/6/2011	1.02	-7.14	50.96	23.66	M-HR	Mixed Asset SGD Aggressive	
Manulife Golden Balanced Growth Fund	0.16	9.73	(blank)	12.70	30/6/2011	1.32	-7.21	32.14	8.30	M-HR	Mixed Asset SGD Balanced	
UOB Life FOF Global Healthcare Fund	0.11	7.72	(blank)	13.00	30/6/2011	2.29	6.22	24.98	-3.21	HR	Equity Sector Pharma&Health	
GE GreatLink Global Bond Fund	0.30	8.06	(blank)	5.03	30/4/2011	0.90	8.00	26.18	25.73	L-MR	Bond Global	
GE GreatLink LifeStyle Progressive Portfolio	0.12	7.92	(blank)	12.67	30/4/2011	1.53	-7.48	25.68	-15.63	HR	Mixed Asset SGD Aggressive	
Aviva Balanced Growth Fund (SP)	0.17	9.86	(blank)	11.97	30/9/2011	2.12	-5.74	32.58	2.42	M-HR	Mixed Asset SGD Balanced	
PruLink Asian Reach Managed Fund	0.23	11.07	-1.38	10.32	30/6/2011	1.47	-6.95	37.01	2.72	M-HR	Mixed Asset SGD Balanced	
PruLink Adapt 2015	0.23	8.05	(blank)	6.47	30/6/2011	1.63	0.53	26.14	3.27	M-HR	Target Maturity Other	
PruLink Adapt 2025	0.17	8.68	(blank)	10.12	30/6/2011	1.67	-4.11	28.38	-8.25	M-HR	Target Maturity Other	
PruLink Adapt 2035	0.13	8.41	(blank)	12.15	30/6/2011	1.71	-6.75	27.42	-15.93	HR	Target Maturity Other	
AIA India Balanced Fund	0.20	12.70	(blank)	13.89	30/6/2011	1.84	-15.11	43.13	8.54	M-HR	Mixed Asset SGD Balanced	
Quadrant B												
AXA Value Growth Fund	0.17	12.42	(blank)	15.65	30/6/2011	1.95	-13.06	42.08	2.66	HR	Equity Asia Pacific Ex Japan	
Aviva MM Capital Growth Fund	0.20	15.16	(blank)	17.18	30/9/2011	1.11	-7.47	52.72	0.78	HR	Equity Asia Pacific Ex Japan	
PruLink Global Equity Fund	0.10	8.11	0.26	15.71	30/6/2011	1.75	-1.28	26.37	-28.74	HR	Equity Global	
PruLink Asian Equity Fund	0.14	14.05	-2.07	21.77	30/6/2011	1.56	-21.01	48.35	-15.67	HR	Equity Asia Pacific Ex Japan	
PruLink Singapore Managed Fund	0.16	12.10	(blank)	15.90	30/6/2011	1.32	-11.51	40.87	3.67	M-HR	Mixed Asset SGD Aggressive	
HSBC Insurance) HSBC-Link Ethical Global Equity Fund	0.15	10.58	2.93	14.70	30/6/2011	1.88	-5.34	35.20	-20.65	HR	Equity Global	
Fidelity Funds - South East Asia A-USD	0.22	19.48	1.66	20.98	30/6/2011	1.95	-10.38	70.55	11.27	HR	Equity Singapore	
UOB LifeLink Asia Fund	0.09	9.26	(blank)	20.09	30/6/2011	1.74	-27.89	30.42	-18.82	HR	Equity Asia Pacific Ex Japan	
UOB LifeLink Growth Fund	0.17	17.04	(blank)	22.36	30/6/2011	1.32	-17.07	60.33	-7.89	HR	Equity Singapore	
NTUC Takaful Fund	0.21	14.38	(blank)	14.99	30/6/2011	1.32	-3.25	49.66	1.40	HR	Equity Global	
NTUC Global Technology Fund	0.30	25.06	13.68	19.32	30/6/2011	1.35	-1.48	95.59	11.30	HR	Equity Sector Information Tech	
John Hancock Pacific Harvest Fund	0.09	8.77	(blank)	20.11	30/6/2011	1.81	-20.87	28.70	-8.88	M-HR	Mixed Asset SGD Aggressive	
Manulife Golden Asia Growth Fund	0.07	9.70	-8.78	27.33	30/6/2011	1.66	-30.95	32.02	-26.18	HR	Equity Asia Pacific Sm&Mid Cap	
PruLink Global Technology Fund	0.23	16.68	3.14	16.02	30/6/2011	1.74	-1.96	58.87	-12.63	HR	Equity Sector Information Tech	
Manulife Golden Singapore Growth Fund	0.16	15.59	-0.85	22.27	30/6/2011	1.76	-16.67	54.46	0.19	HR	Equity Singapore	
Manulife Golden S.E.A. Special Situations Fund	0.18	24.74	(blank)	33.28	30/6/2011	1.66	-21.73	94.12	8.77	HR	Equity ASEAN	
AIA Growth Fund	0.15	12.79	(blank)	18.55	30/6/2011	1.29	-12.04	43.50	1.50	M-HR	Mixed Asset SGD Aggressive	
AIA Regional Equity Fund	0.15	14.27	-1.87	20.69	30/6/2011	1.32	-13.62	49.22	-13.93	HR	Equity Emerging Mkts Asia	
AIA Global Technology Fund	0.25	18.37	3.03	16.80	30/6/2011	1.90	-4.45	65.87	10.48	HR	Equity Sector Information Tech	
AIA Acorns of Asia Fund	0.21	14.64	(blank)	15.62	30/6/2011	1.76	-11.55	50.65	0.31	M-HR	Mixed Asset SGD Balanced	
TMLS Asian Equity Fund	0.26	19.49	4.46	17.29	31/3/2011	1.60	-11.85	70.61	12.95	HR	Equity Asia Pacific Ex Japan	
UOB Life FOF Growth Fund	0.16	15.73	(blank)	22.88	30/6/2011	1.24	-17.54	55.00	-11.79	HR	Equity Singapore	
UOB Life FOF Asia Fund	0.09	9.16	(blank)	20.04	30/6/2011	1.64	-28.04	30.09	-18.37	HR	Equity Asia Pacific Ex Japan	
GE GreatLink ASEAN Growth Fund	0.29	23.40	(blank)	18.85	30/4/2011	1.54	-9.48	87.90	23.67	HR	Equity ASEAN	
GE GreatLink Global Technology Fund	0.22	17.51	3.49	18.05	30/4/2011	1.68	-2.37	62.28	-11.90	HR	Equity Sector Information Tech	
GE GreatLink Far East ex Japan Equities Fund	0.10	9.96	-7.85	19.82	30/4/2011	1.55	-20.64	32.97	-12.86	HR	Equity Asia Pacific Ex Japan	
GE GreatLink Singapore Equities Fund	0.14	13.90	-3.14	22.02	30/4/2011	1.55	-22.17	47.76	-6.69	HR	Equity Singapore	
John Hancock Pacific Equity Fund	0.07	9.66	-8.84	27.33	30/6/2011	1.66	-30.95	31.88	-26.31	HR	Equity Asia Pacific Ex Japan	
Aviva Capital Growth Fund (SP)	0.18	14.00	(blank)	17.16	30/9/2011	2.12	-8.44	48.15	-4.18	HR	Equity Asia Pacific Ex Japan	
Aviva Emerging Countries Growth Fund (SP)	0.12	11.00	-7.32	19.50	30/9/2011	2.90	-21.78	36.75	-26.89	HR	Equity Emerging Mkts Global	
NTUC Singapore Equity Fund	0.16	14.91	(blank)	21.40	30/6/2011	0.73	-17.07	51.73	-3.51	HR	Equity Singapore	
AXA Fortress Fund	0.23	19.42	1.57	20.34	30/6/2011	1.95	-9.84	70.29	9.01	HR	Equity Singapore	
Manulife Lifestyle Portfolios - Aggressive	0.09	9.49	(blank)	20.09	30/6/2011	1.85	-19.09	31.25	-18.12	HR	Equity Global	
HSBC Insurance)HSBC-Link India Equity Fund	0.05	8.33	-1.64	32.99	30/6/2011	1.95	-44.85	27.14	-36.69	HR	Equity India	
HSBC Insurance) HSBC-Link Ethical Asia Equity Fund	0.20	15.42	(blank)	16.83	30/6/2011	1.75	-9.61	53.78	-3.50	HR	Equity Asia Pacific Ex Japan	
PruLink China-India Fund	0.11	11.57	1.46	23.02	30/6/2011	1.64	-27.97	38.88	-4.86	HR	Equity Emerging Mkts Asia	
AXA Asian Growth Fund	0.17	12.40	(blank)	15.66	30/6/2011	1.95	-13.10	42.00	2.55	HR	Equity Asia Pacific Ex Japan	
Manulife India Equity Fund	0.16	16.35	5.91	23.80	30/6/2011	1.93	-24.70	57.51	-12.86	HR	Equity India	
Aviva Legg Mason Asian Enterprise Trust (SP)	0.06	8.85	-10.02	27.36	30/9/2011	2.42	-31.36	28.96	-29.82	HR	Equity Asia Pacific Sm&Mid Cap	
PruLink Emerging Markets Fund	0.15	13.32	-4.04	19.82	30/6/2011	1.86	-17.73	45.52	-16.90	HR	Equity Emerging Mkts Global	
PruLink America Fund	0.14	10.36	0.23	15.24	30/6/2011	1.94	-3.08	34.42	-20.61	HR	Equity North America	

Singapore Unit Trust	Sharpe Ratio ¹ (3Year)	Annualised Monthly Return SGD % (3Year)	Annualised Excess Return ² SGD % (3Year)	Annualised Monthly Risk SGD % (3Year)	Expense Ratio		12/31/2010 12/31/2011 1-Year Fund Performance	12/31/2008 12/31/2011 3-Year Fund Performance	12/31/2006 12/31/2011 5-Year Fund Performance	CPFIS Risk Classification ³	Lipper Global Classification
					Date	Value					
GE GreatLink Global Real Estate Securities Fund	0.12	10.72	3.31	19.19	30/4/2011	1.67	-5.61	35.72	-34.26	HR	Equity Sector Real Est Global
AIA India Opportunities Fund	0.18	17.84	9.13	22.58	30/6/2011	1.93	-25.47	63.62	2.41	HR	Equity India
TMLS Global Equity Fund	0.12	9.10	1.40	15.06	31/3/2011	1.91	-1.25	29.85	-15.49	HR	Equity Global
AXA Singapore Equity Fund	0.19	17.52	-1.08	21.55	30/6/2011	1.95	-15.85	62.31	11.04	HR	Equity Singapore
AXA Pacific Equity Fund	0.25	19.55	4.54	17.79	30/6/2011	1.82	-12.01	70.86	10.70	HR	Equity Asia Pacific Ex Japan
Aviva Aberdeen Pacific Equity (SP)	0.23	18.46	3.11	18.09	30/9/2011	3.02	-13.52	66.24	6.52	HR	Equity Asia Pacific Ex Japan
HSBC Insurance) HSBC-Link Emerging Markets Equity Fund	0.14	12.77	-0.68	19.25	30/6/2011	2.15	-16.88	43.41	-11.18	HR	Equity Emerging Mkts Global
GE GreatLink Lion India Fund	0.05	7.90	-4.57	27.30	30/4/2011	1.69	-36.05	25.61	(blank)	HR	Equity India
AIA Emerging Markets Equity Fund	0.07	7.85	-11.35	20.31	30/6/2011	1.22	-25.30	25.46	-26.84	HR	Equity Emerging Mkts Global
Manulife Pacific Equity Fund	0.25	19.90	5.00	18.06	30/6/2011	1.75	-12.52	72.37	13.31	HR	Equity Asia Pacific Ex Japan
Manulife Global Emerging Markets Fund	0.27	21.45	6.85	18.57	30/6/2011	1.82	-11.37	79.13	23.82	HR	Equity Emerging Mkts Global
AIA Global Resources Fund	0.17	18.71	-3.14	24.32	30/6/2011	1.63	-25.84	67.28	(blank)	HR	Equity Sector Natural Resource
FruLink Global Basics Fund	0.17	13.67	(blank)	17.71	30/6/2011	1.76	-12.08	46.89	-10.86	HR	Equity Sector Basic Industries
FruLink Global Property Securities Fund	0.11	11.89	-3.59	23.86	30/6/2011	1.85	0.09	40.07	(blank)	HR	Equity Sector Real Est Global
Quadrant C											
Aviva MM Income Growth Fund	0.16	6.18	(blank)	6.33	30/9/2011	1.12	-1.48	19.72	10.89	M-HR	Mixed Asset SGD Conservative
FruLink Global Bond Fund	-0.05	1.48	0.43	6.37	30/6/2011	0.77	7.66	4.52	18.56	L-MR	Bond Global
FruLink Global Managed Fund	0.04	3.51	-2.26	7.63	30/6/2011	1.54	-3.15	10.90	-10.48	M-HR	Mixed Asset SGD Balanced
FruLink Singapore Cash Fund	-2.86	0.86	0.76	0.16	30/6/2011	0.31	0.43	2.61	7.45	L-R	Money Market SGD
NTUC Singapore Bond Fund	0.14	3.96	(blank)	2.91	30/6/2011	0.58	6.95	12.36	25.42	L-MR	Bond SGD
John Hancock Worldwide Bond Fund	-0.18	-1.02	(blank)	5.60	30/6/2011	1.34	7.02	-3.03	4.42	L-MR	Bond Global
John Hancock Singapore Cash Fund	-4.94	0.18	0.07	0.13	30/6/2011	0.67	-0.14	0.53	4.66	L-R	Money Market SGD
Manulife Golden International Bond Fund	-0.15	-0.53	(blank)	5.58	30/6/2011	0.84	7.51	-1.58	7.12	L-MR	Bond Global
John Hancock Global Balanced Fund	-0.04	1.22	(blank)	8.20	30/6/2011	1.93	-4.22	3.72	-19.01	M-HR	Mixed Asset SGD Balanced
HSBC Insurance) HSBC-Link Premium Balanced Fund	0.11	6.39	-1.67	9.55	30/6/2011	1.73	-8.49	20.43	-8.11	M-HR	Mixed Asset SGD Balanced
Manulife Golden Global Balanced Fund	-0.03	1.58	(blank)	8.19	30/6/2011	1.64	-3.93	4.80	-17.33	M-HR	Mixed Asset SGD Balanced
FruLink Protected Global Titans Fund	-0.40	0.12	(blank)	1.66	30/6/2011	0.81	0.06	0.36	5.69	L-MR	Protected
AIA Regional Fixed Income Fund	0.36	6.67	(blank)	3.13	30/6/2011	0.88	3.76	21.38	16.64	L-MR	Bond SGD
AIA SS Money Market Fund	-6.93	-0.06	(blank)	0.11	30/6/2011	0.30	-0.10	-0.19	2.15	L-R	Money Market SGD
AIA Global Balanced Fund	0.08	5.47	-0.07	9.98	30/6/2011	1.74	-3.17	17.33	-16.95	M-HR	Mixed Asset SGD Balanced
AIA International Health Care Fund	-0.01	1.80	-2.46	13.67	30/6/2011	2.36	1.32	5.49	-24.61	HR	Equity Sector Pharma&Health
UOB Life FOF Millennium Trust I	0.01	2.67	(blank)	7.35	30/6/2011	3.59	2.12	8.22	-8.08	M-HR	Mixed Asset SGD Balanced
UOB Life FOF Millennium Trust II	0.02	3.14	(blank)	8.21	30/6/2011	2.99	-3.76	9.71	-9.15	M-HR	Mixed Asset SGD Balanced
UOB Life FOF Millennium Trust III	0.03	3.60	(blank)	10.89	30/6/2011	2.98	-3.15	11.20	-23.99	HR	Mixed Asset SGD Aggressive
GE GreatLink Cash Fund	-1.68	0.74	0.64	0.30	30/4/2011	0.32	0.24	2.24	6.48	L-R	Money Market SGD
GE GreatLink Global Supreme Fund	0.14	6.10	(blank)	7.02	30/4/2011	1.43	3.63	19.44	-1.32	M-HR	Mixed Asset SGD Balanced
GE GreatLink Global Optimum Fund	0.00	2.51	(blank)	7.06	30/4/2011	1.41	-2.47	7.74	-15.07	M-HR	Mixed Asset SGD Balanced
AIA Portfolio 30	0.21	6.89	(blank)	5.67	30/6/2011	1.56	0.81	22.11	3.91	L-MR	Mixed Asset SGD Conservative
AIA Portfolio 50	0.09	5.00	(blank)	7.77	30/6/2011	1.79	-2.79	15.76	-7.14	M-HR	Mixed Asset SGD Balanced
AIA Portfolio 70	0.04	4.17	(blank)	10.32	30/6/2011	1.81	-6.06	13.02	-17.31	M-HR	Mixed Asset SGD Aggressive
GE GreatLink Stable Bond Fund	0.14	3.35	(blank)	1.70	30/4/2011	0.73	1.85	10.40	15.35	L-MR	Bond Global
GE GreatLink LifeStyle Secure Portfolio	0.32	7.56	(blank)	4.35	30/4/2011	1.03	2.73	24.44	16.51	M-HR	Mixed Asset SGD Conservative
GE GreatLink LifeStyle Steady Portfolio	0.19	7.18	(blank)	6.57	30/4/2011	1.18	-0.48	23.12	1.96	M-HR	Mixed Asset SGD Balanced
GE GreatLink LifeStyle Balanced Portfolio	0.14	7.36	(blank)	9.51	30/4/2011	1.36	-4.14	23.74	-6.67	M-HR	Mixed Asset SGD Balanced
John Hancock Adventurous Portfolio	0.05	4.75	(blank)	13.01	30/6/2011	1.64	-13.22	14.93	-14.31	M-HR	Mixed Asset SGD Aggressive
John Hancock Balanced Portfolio	0.02	3.40	(blank)	9.94	30/6/2011	1.67	-8.35	10.54	-12.64	M-HR	Mixed Asset SGD Balanced
John Hancock Cautious Portfolio	-0.15	0.10	(blank)	4.61	30/6/2011	1.56	3.20	0.31	-1.36	M-HR	Mixed Asset SGD Conservative
AXA Global Defensive Fund	-0.09	0.99	0.03	4.81	30/6/2011	1.15	3.52	3.00	-2.59	L-MR	Bond Global
AXA Global Secure Fund	0.02	3.00	-0.60	5.55	30/6/2011	1.15	0.08	9.26	-10.20	L-MR	Mixed Asset SGD Conservative
AXA Global Balanced Fund	0.04	3.76	(blank)	8.14	30/6/2011	1.75	-2.19	11.73	-19.65	M-HR	Mixed Asset SGD Balanced
AXA Global Growth Fund	0.05	4.60	(blank)	10.96	30/6/2011	1.75	-4.55	14.46	-26.37	M-HR	Mixed Asset SGD Aggressive
HSBC Insurance) HSBC-Link Ethical Capital Protected Fund	-0.08	0.36	(blank)	7.92	30/6/2011	1.84	-7.11	1.07	-11.60	M-HR	Equity Global
HSBC Insurance) HSBC-Link Singapore Bond Fund	0.13	3.30	3.01	1.69	30/6/2011	0.77	1.80	10.22	15.12	L-MR	Bond Global
Aviva Income Growth Fund (SP)	0.11	5.14	(blank)	6.29	30/9/2011	2.12	-2.53	16.22	5.32	M-HR	Mixed Asset SGD Conservative
Aviva Templeton Global Balanced (SP)	0.00	2.44	(blank)	13.41	30/9/2011	2.37	-5.50	7.49	-26.22	M-HR	Mixed Asset SGD Balanced
NTUC Global Managed Fund (Balanced)	0.13	6.36	(blank)	8.17	30/6/2011	1.16	-3.02	20.31	-2.58	M-HR	Mixed Asset SGD Balanced
NTUC Global Managed Fund (Conservative)	0.21	6.22	(blank)	4.92	30/6/2011	1.05	1.05	19.85	7.77	M-HR	Mixed Asset SGD Conservative
NTUC Global Bond Fund	0.37	6.42	(blank)	2.92	30/6/2011	0.94	5.36	20.52	22.03	L-MR	Bond Global
NTUC Global Managed Fund (Growth)	0.10	6.90	(blank)	11.39	30/6/2011	1.23	-6.12	22.17	-12.42	M-HR	Mixed Asset SGD Aggressive
AIA Greater China Balanced Fund	0.09	6.32	(blank)	11.85	30/6/2011	1.72	-13.93	20.18	-11.99	M-HR	Mixed Asset SGD Balanced

Singapore Unit Trust	Sharpe Ratio ¹ (3Year)	Annualised Monthly Return SGD % (3Year)	Annualised Excess Return ² SGD % (3Year)	Annualised Monthly Risk SGD % (3Year)	Expense Ratio		12/31/2010 12/31/2011 1-Year Fund Performance	12/31/2008 12/31/2011 3-Year Fund Performance	12/31/2006 12/31/2011 5-Year Fund Performance	CPFIS Risk Classification ³	Lipper Global Classification
					Date	Value					
Manulife Lifestyle Portfolios - Growth	0.07	6.04	(blank)	14.02	30/6/2011	1.73	-13.40	19.24	-13.17	HR	Mixed Asset SGD Aggressive
Manulife Lifestyle Portfolios - Moderate	0.08	5.64	(blank)	10.38	30/6/2011	1.48	-8.49	17.90	-3.86	M-HR	Mixed Asset SGD Balanced
Manulife Lifestyle Portfolios - Secure	-0.02	2.11	(blank)	4.89	30/6/2011	1.43	-0.35	6.47	-4.27	M-HR	Mixed Asset SGD Balanced
Manulife Lifestyle Portfolios - Conservative	-0.09	1.51	(blank)	3.02	30/6/2011	1.36	2.95	4.59	3.57	M-HR	Mixed Asset SGD Conservative
Manulife Singapore Bond Fund	0.11	3.56	0.41	2.57	30/6/2011	0.98	5.51	11.06	21.42	L-MR	Bond SGD
Manulife Singapore Cash Fund	-4.96	0.18	0.07	0.13	30/6/2011	0.66	-0.16	0.53	4.75	LR	Money Market SGD
Aviva Legg Mason Global Bond Trust (SP)	-0.23	-1.94	-1.81	5.57	30/9/2011	2.23	5.97	-5.71	-0.95	L-MR	Bond Global
Aviva DBS Enhanced Income (SP)	-0.37	1.46	0.98	0.80	30/9/2011	2.06	-0.09	4.45	0.19	L-MR	Money Market SGD
TMLS Global Balanced Fund	0.12	6.52	-1.51	9.09	31/3/2011	1.67	-7.80	20.88	-4.28	M-HR	Mixed Asset SGD Balanced
AIA Japan Balanced Fund	-0.01	2.35	(blank)	6.47	30/6/2011	1.80	-1.35	7.21	-21.53	M-HR	Mixed Asset SGD Balanced
AIA Emerging Markets Balanced Fund	0.10	6.80	(blank)	11.51	30/6/2011	1.50	-13.64	21.83	-11.67	M-HR	Mixed Asset SGD Balanced
GE GreatLink Lion Asian Balanced Fund	0.08	4.90	(blank)	8.69	30/4/2011	1.36	-9.92	15.43	(blank)	M-HR	Mixed Asset SGD Balanced
HSBC Insurance) HSBC-Link Global Bond Fund	-0.16	-0.62	(blank)	5.61	30/6/2011	0.98	7.36	-1.85	(blank)	L-MR	Bond Global
Quadrant D											
UOB LifeLink Global Fund	0.02	3.39	-6.39	14.21	30/6/2011	1.37	-9.96	10.53	-30.88	HR	Equity Global
NTUC Global Equity Fund	0.05	5.64	-1.91	16.03	30/6/2011	1.47	-7.86	17.89	-34.20	HR	Equity Global
John Hancock Worldwide Equities Fund	0.01	2.90	-6.23	14.30	30/6/2011	1.91	-10.69	8.94	-33.18	HR	Equity Global
John Hancock Greater China Fund	0.06	6.68	-1.37	19.04	30/6/2011	1.93	-20.40	21.39	3.58	HR	Equity Greater China
John Hancock Japan Growth Fund	-0.10	-3.95	-0.44	17.59	30/6/2011	1.86	-16.84	-11.40	-48.48	HR	Equity Japan
PruLink Pan European Fund	-0.01	2.04	-2.79	19.01	30/6/2011	1.74	-14.33	6.25	-40.41	HR	Equity Europe
Manulife Golden Regional China Fund	0.06	6.68	-1.37	19.00	30/6/2011	1.93	-20.41	21.41	4.08	HR	Equity China
Manulife Golden Worldwide Equity Fund	0.01	3.04	-6.05	14.29	30/6/2011	1.86	-10.63	9.40	-32.42	HR	Equity Global
John Hancock European Equity Fund	-0.01	1.75	-0.93	22.48	30/6/2011	2.37	-22.33	5.35	-46.84	HR	Equity Europe
UOB Life FOF Asia Top 50 Fund	-0.03	0.84	(blank)	15.06	30/6/2011	2.02	-22.44	2.54	-41.89	HR	Equity Asia Pacific
UOB Life FOF Greater China Fund	0.03	5.08	(blank)	21.85	30/6/2011	1.85	-27.77	16.03	-25.61	HR	Equity Greater China
UOB Life FOF International Growth Fund	0.02	3.35	(blank)	14.34	30/6/2011	1.33	-10.00	10.40	-30.72	HR	Equity Global
GE GreatLink Enhancer Fund	0.06	6.80	-12.77	18.59	30/4/2011	1.54	-21.43	21.81	-12.02	HR	Equity Asia Pacific Ex Japan
GE GreatLink Pan Asia Fund	0.06	5.67	1.18	14.93	30/4/2011	1.55	-19.32	17.98	-34.78	HR	Equity Asia Pacific
GE GreatLink European Equity Fund	-0.01	1.57	-2.80	19.49	30/4/2011	1.62	-13.81	4.77	-44.53	HR	Equity Europe
GE GreatLink Global Equity Fund	0.06	5.86	-1.65	15.84	30/4/2011	1.68	-5.61	18.64	-32.65	HR	Equity Global
GE GreatLink Global Growth Trends Portfolio	0.02	3.65	-4.23	15.06	30/4/2011	1.67	-11.19	11.34	-45.86	HR	Equity Global
AIA Portfolio 100	0.06	5.46	-3.16	14.43	30/6/2011	1.92	-5.57	17.29	-30.54	HR	Equity Global
GE GreatLink Global Opportunities Fund	0.09	7.30	0.01	14.22	30/4/2011	1.83	-1.12	23.53	-29.75	HR	Equity Global
GE GreatLink Global Equity Alpha Fund	-0.04	0.16	-9.19	15.42	30/4/2011	1.80	-13.84	0.49	-45.87	HR	Equity Global
GE GreatLink LifeStyle Dynamic Portfolio	0.07	6.29	(blank)	15.76	30/4/2011	1.69	-11.40	20.08	-28.94	HR	Equity Global
AXA Global High Growth Portfolio	0.05	5.26	-3.08	15.63	30/6/2011	1.95	-7.87	16.63	-39.18	HR	Equity Global
Aviva EU Convergence Growth Fund (SP)	-0.03	-1.10	(blank)	32.15	30/9/2011	2.91	-28.36	-3.27	-50.67	HR	Equity Emerging Mkts Europe
AIA Greater China Equity Fund	0.06	6.65	-5.96	18.56	30/6/2011	1.74	-22.80	21.31	-24.13	HR	Equity Greater China
HSBC Insurance) HSBC-Link China Equity Fund	0.01	3.37	-5.28	17.95	30/6/2011	1.94	-22.42	10.44	-27.40	HR	Equity China
Manulife Japan Growth Fund	-0.11	-4.59	-1.04	17.76	30/6/2011	1.72	-17.85	-13.16	-50.65	HR	Equity Japan
Aviva Henderson European Fund (SP)	-0.05	-1.21	-3.08	20.06	30/9/2011	3.56	-10.98	-3.58	-49.40	HR	Equity Europe ex UK
Aviva LionGlobal India (SP)	0.04	6.33	-6.59	26.12	30/9/2011	2.84	-36.15	20.23	-20.77	HR	Equity India
Aviva LionGlobal Japan Growth (SP)	0.02	3.88	6.91	17.61	30/9/2011	2.81	-11.76	12.11	-41.31	HR	Equity Japan
AXA Global Equity Blend	-0.02	1.43	-7.66	17.36	30/6/2011	1.94	-13.46	4.34	-51.43	HR	Equity Global
AXA China Growth Fund	0.04	5.42	-8.09	18.25	30/6/2011	1.77	-22.20	17.15	(blank)	HR	Equity China
AIA Japan Equity Fund	-0.20	-8.08	-5.99	15.33	30/6/2011	1.94	-14.29	-22.34	-58.01	HR	Equity Japan
GE GreatLink Lion Japan Growth Fund	0.03	4.32	5.64	14.46	30/4/2011	1.67	-9.33	13.52	(blank)	HR	Equity Japan
Aviva AllianceBernstein Global Growth Trends (SP)	-0.01	2.15	-6.79	15.32	30/9/2011	3.43	-12.50	6.58	-50.14	HR	Equity Global
AXA India Fund	0.05	7.56	-5.01	27.13	30/6/2011	1.87	-36.30	24.43	(blank)	HR	Equity India
GE GreatLink China Growth Fund	0.07	6.86	-5.70	17.78	30/4/2011	1.55	-20.96	22.01	(blank)	HR	Equity Greater China
PruLink Global Leaders Fund	0.08	7.55	-1.04	16.67	30/6/2011	1.94	-12.11	24.40	(blank)	HR	Equity Global
HSBC Insurance) HSBC-Link Global Equity Fund	0.00	2.29	(blank)	17.02	30/6/2011	1.70	-14.33	7.04	(blank)	HR	Equity Global

Note 1: Sharpe Ratio is a measurement of a fund's annualized return that is in excess of the risk-free rate (a theoretical interest rate that would be returned on an investment that is completely free of risk) and adjusted for the fund's volatility. The calculation is as follows: (Fund Return – Risk-Free Return)/Fund Standard Deviation. From this formula, it can be derived that the higher a fund's Sharpe ratio, the better its returns relative to the amount of investment risk it has taken.

Note 2: Annualized Excess Return is a fund's excess return relative to its benchmark, on an annualised basis. Benchmarks may either be supplied to Lipper by the fund's managers, or be assigned on a case-by-case basis in accordance with the fund's stated mandate and Lipper Global Classifications and Methodology.

Note 3: HR=Higher Risk, M-HR=Medium to High Risk, L-MR=Low to Medium Risk, LR=Lower Risk